

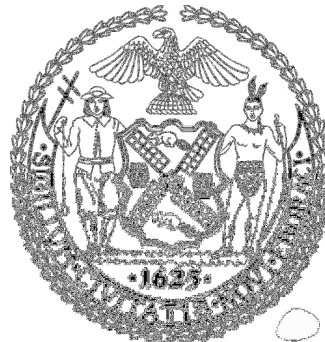
# Advancing Health Equity in NYC: A Place-Based Approach

---

Oxiris Barbot, MD

First Deputy Commissioner

New York City Department of Health and Mental Hygiene



# TODAY'S OBJECTIVES

---

- The Case for Investing in Key Neighborhoods
- Take Care New York 2020
- Working with the Health Care Delivery System
- Operationalizing the Place-Based Approach

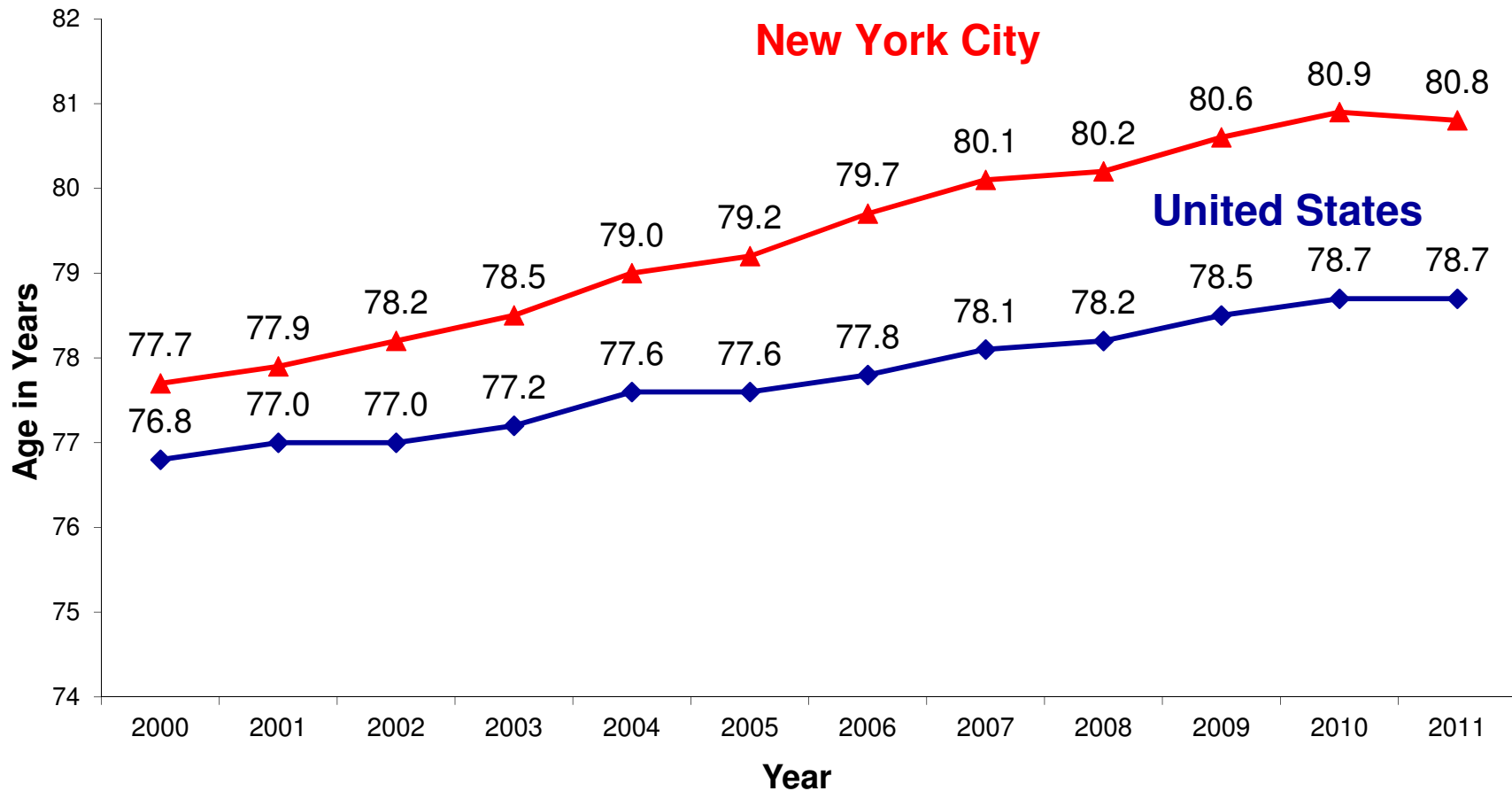


# HEALTH STATUS OF NYC

---

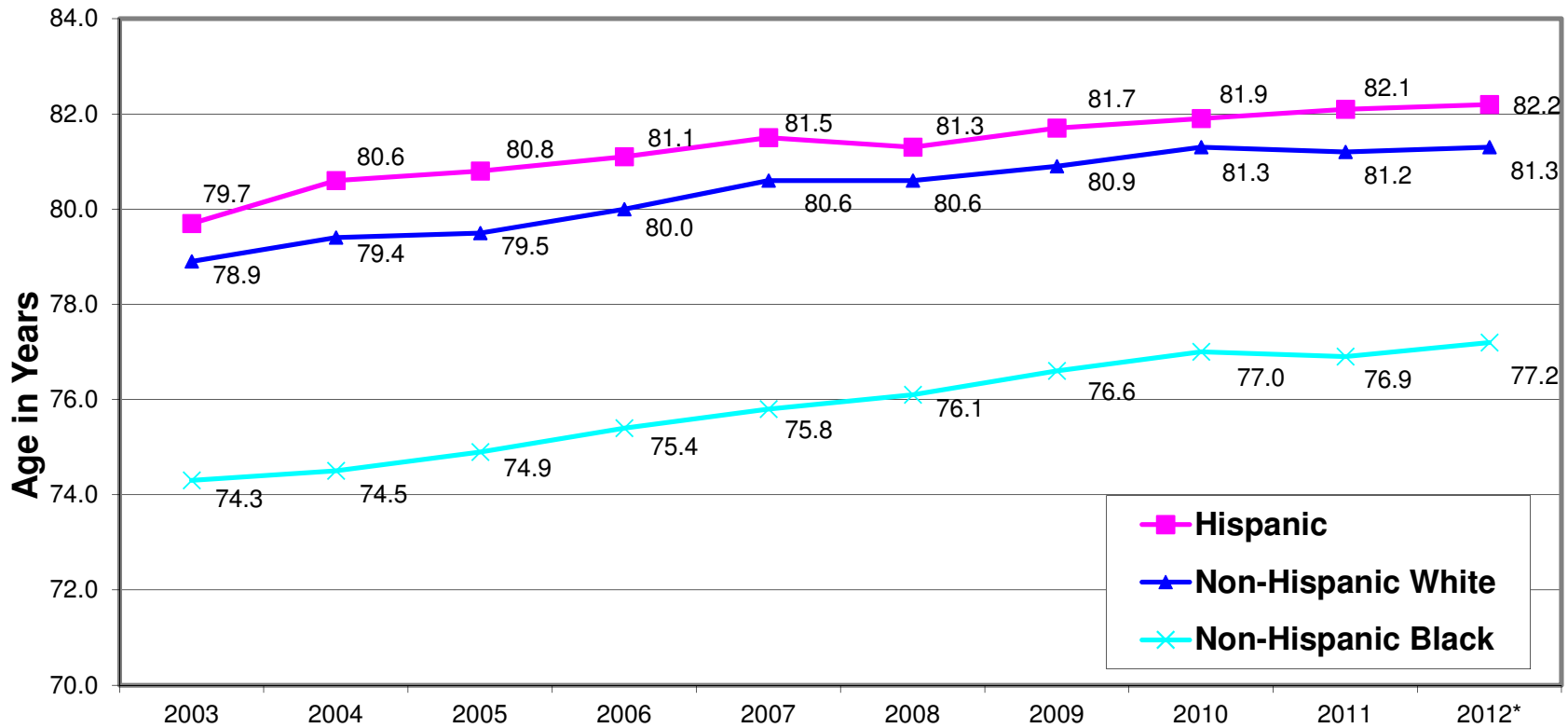


# Trends in Life Expectancy at Birth, NYC and US, 2000-2011



Note: NCHS re-estimated 2001-2009 life table data using new 2001-2009 intercensal population estimates and data may differ from those previously published. New York City data for 2001-2008 have been revised by using interpolated population estimates based on 2010 census counts and may differ from previously published. 2011 data are preliminary.

# Life Expectancy at Birth by Race/ Ethnicity, NYC, 2003-2013



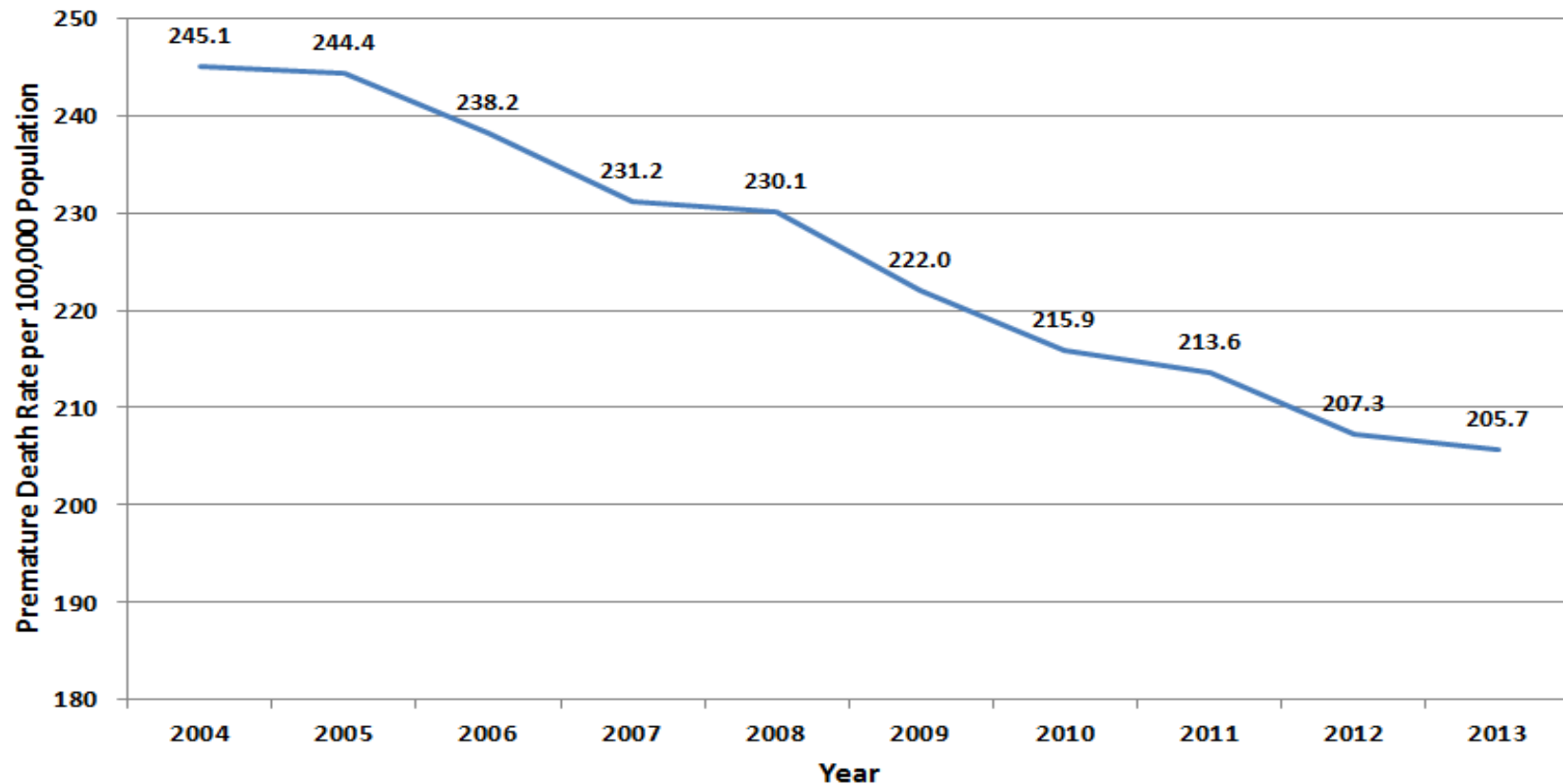
\* Life expectancy at birth estimates for 2012 are preliminary.

Year



# Citywide Premature Mortality

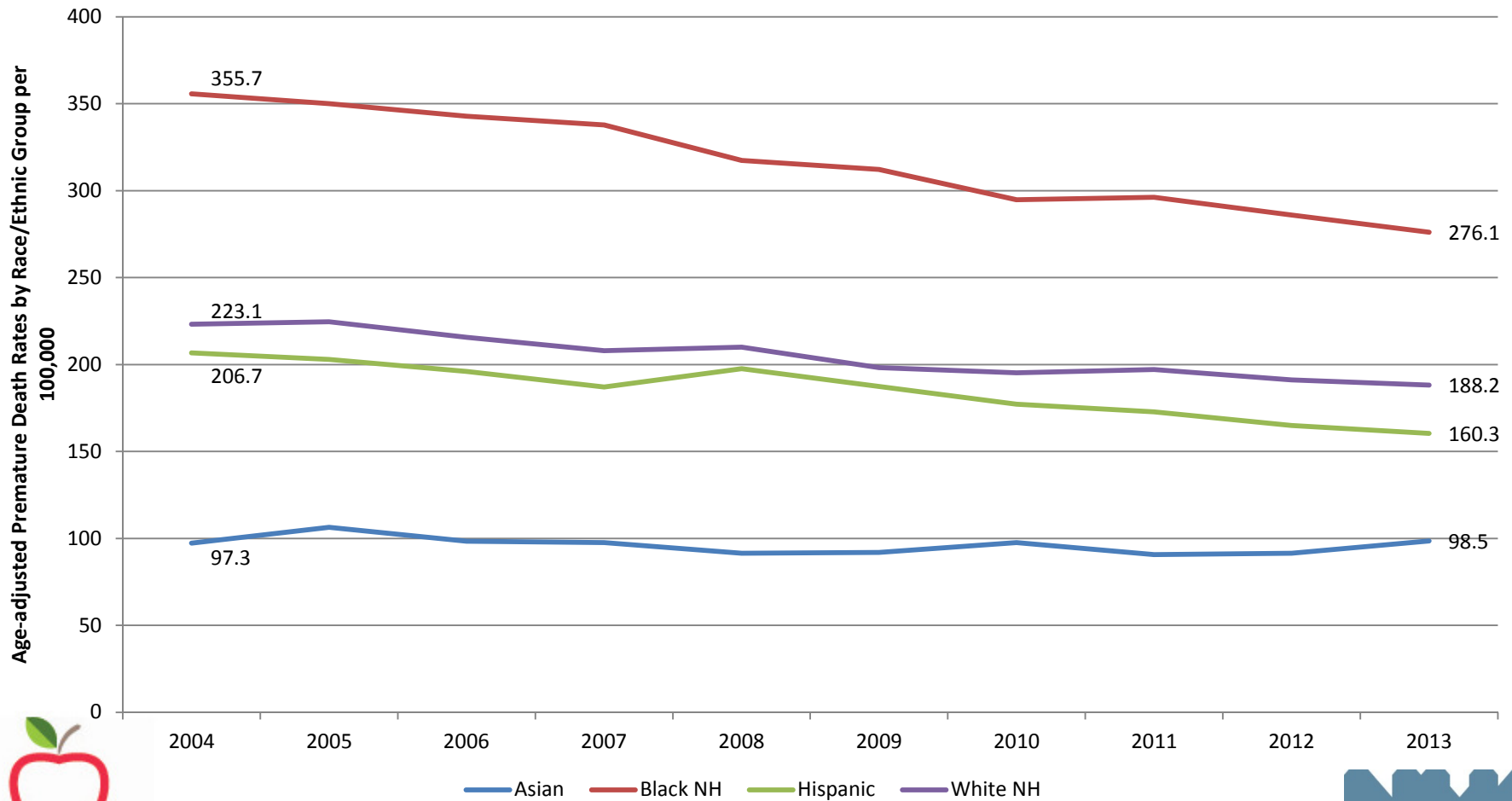
Premature (Age<65) Crude Death Rate per 100,000 Population  
New York City, 2004 – 2013



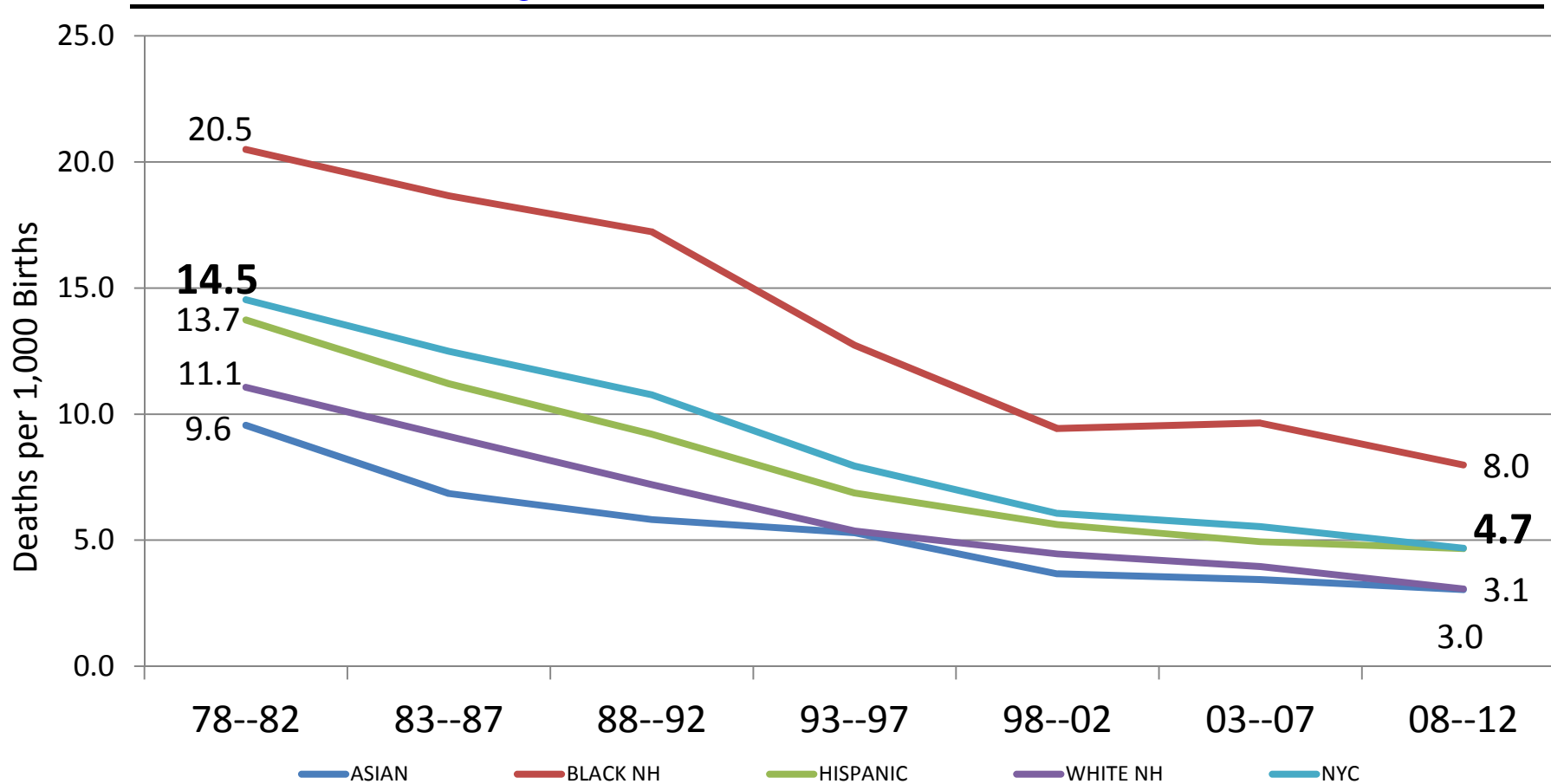
May 26, 2013  
Bureau of Vital Statistics  
New York City Department of Health and Mental Hygiene



# Age-Adjusted Premature Death Rates by Race/Ethnicity, 2004-2013



# Infant Mortality Rates Citywide and by Race/Ethnicity in 5-Year Periods, 1978-2012



Source: NYC BVS DOHMH, 2014

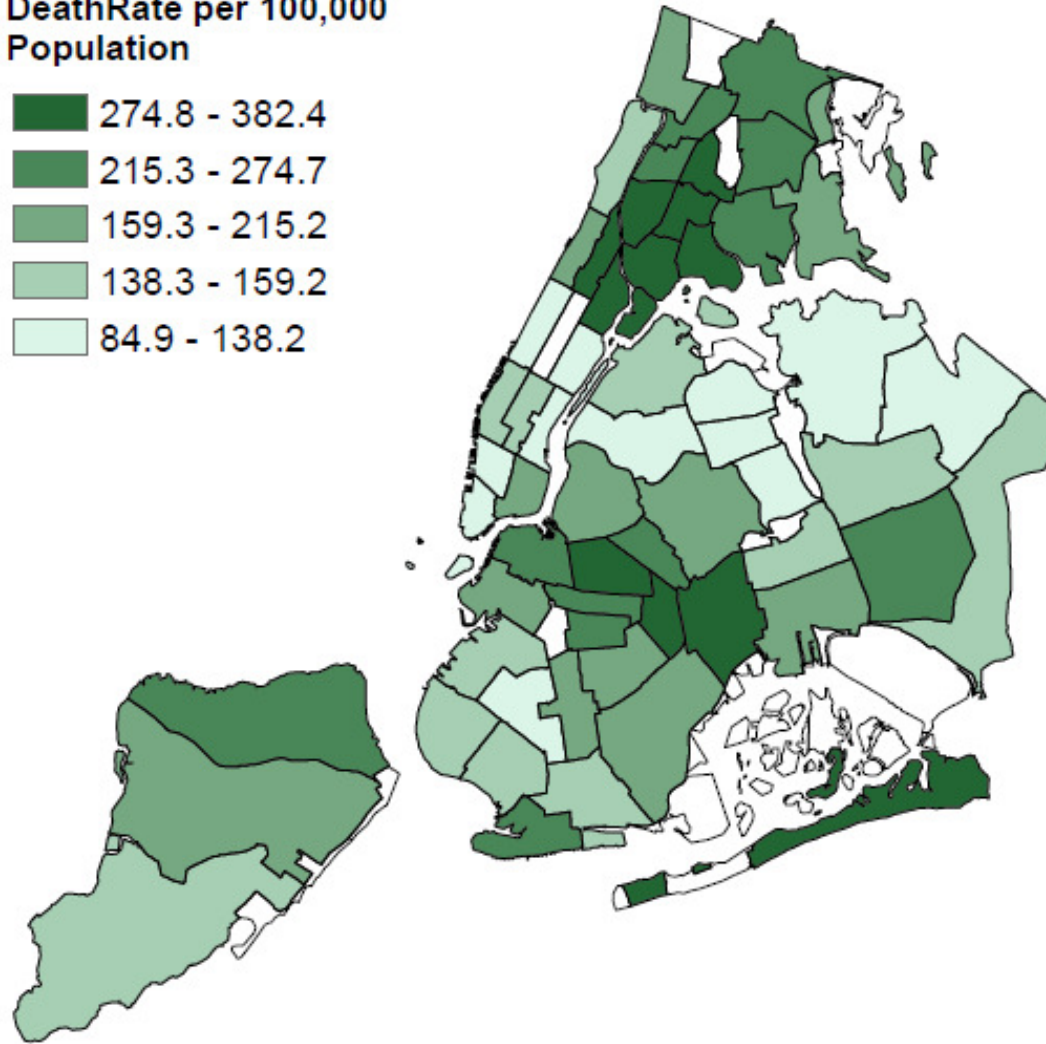
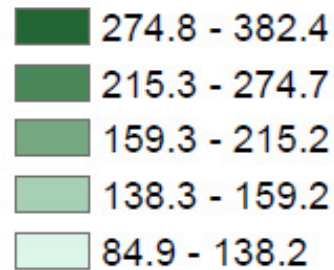




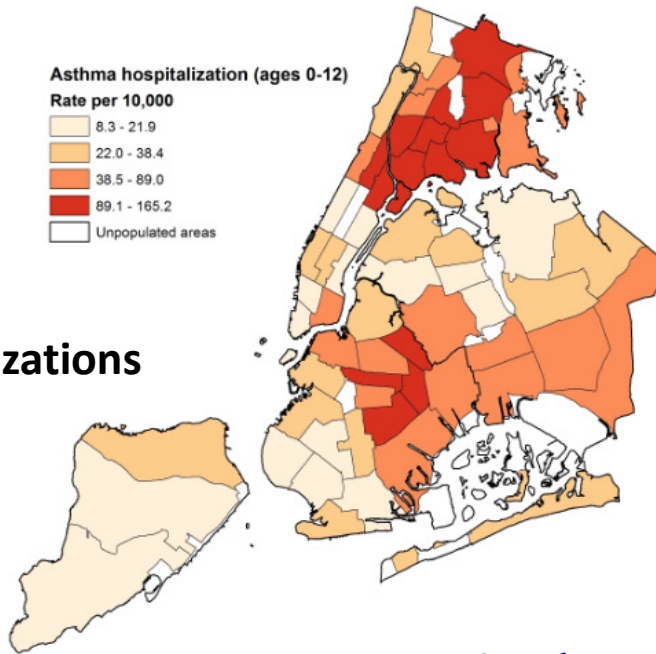
# Identifying Equity Gaps

---

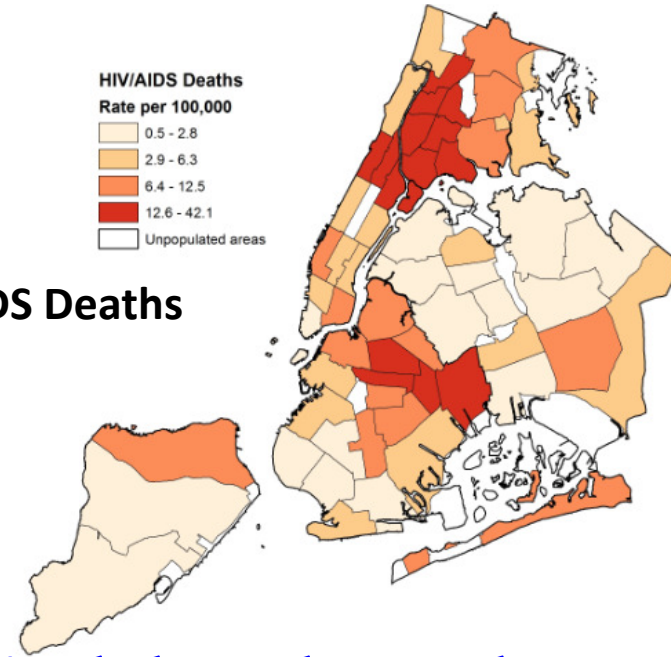
Premature Age-Adjusted  
DeathRate per 100,000  
Population



**Asthma  
Hospitalizations**

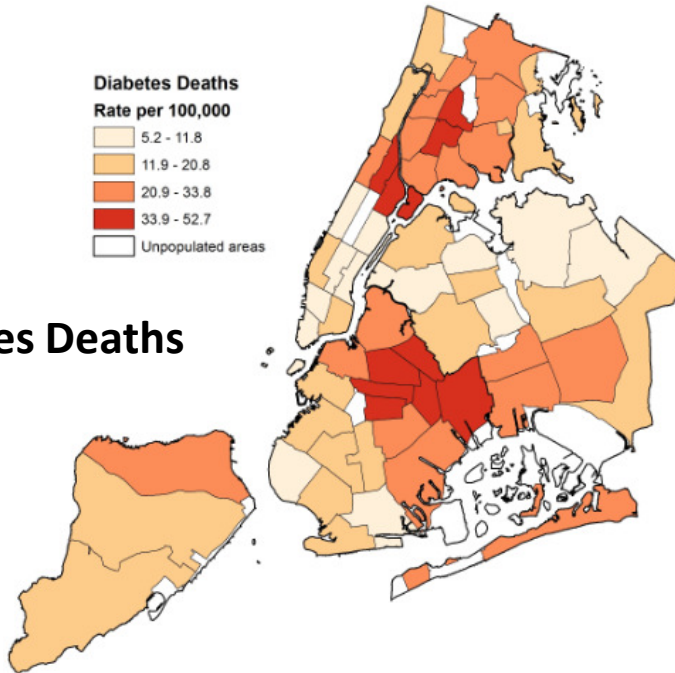


**HIV/AIDS Deaths**

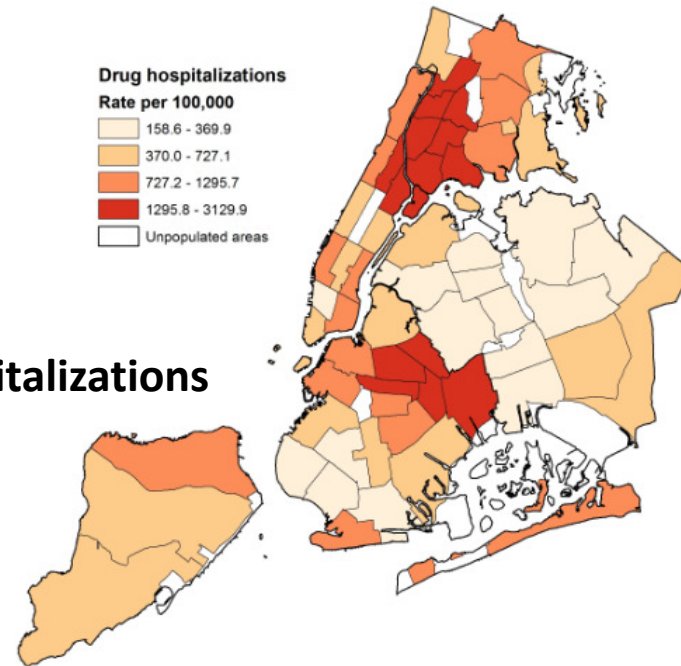


# NYC's Sickest Neighborhoods

**Diabetes Deaths**



**Drug  
Hospitalizations**



**Advancing  
Health Equity**

**Moving from  
Maps to Action**



**TCNY/2020**

**EVERY NEIGHBORHOOD, EVERY NEW YORKER**





**EVERYONE'S  
HEALTH COUNTS**



**TAKE CARE**  
NEW YORK

# Take Care New York 2020 Priorities

---

-  Create Healthier Neighborhoods
-  Support Healthy Living
-  Promote Healthy Childhoods
-  Increase Access to Quality Care



# Take Care New York (TCNY) 2020

---

## A Change in Perspective

- *Acknowledge the roots of health inequities, including lack of access to education and medical care, substandard housing, and poor air quality*
- *Engage the community in addressing social determinants of health and the conditions that create/perpetuate health inequities*
- *Align with and build on citywide efforts (OneNYC, Age-friendly NYC, Universal Pre-K)*
- *Align with and integrate NYS reforms (DSRIP, Prevention Agenda, SHIP)*



# Framework for a Healthy New York City

---

Reduce  
Rates of  
Premature  
Mortality

Reduce  
Rates of  
Infant  
Mortality

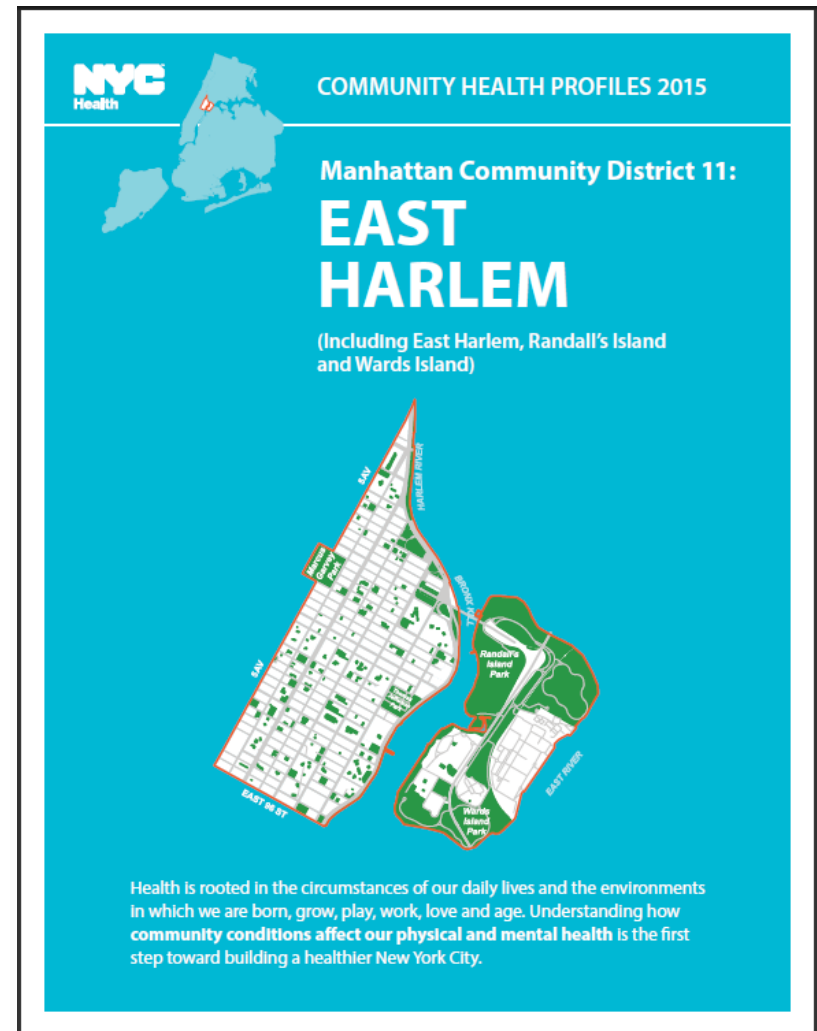
Self-  
Reported  
Health  
Status



# New York City Community Health Profiles 2015

Making injustice visible by:

- Reporting by Community District
- Including new neighborhood-level measures on social determinants of health (air quality, school absenteeism, etc)





# Stakeholder Engagement in TCNY 2020 Agenda Development

**TCNY/2020**  
EVERY NEIGHBORHOOD, EVERY NEW YORKER  
**EVERYONE'S HEALTH COUNTS**



**THIS BALLOT IS FOR YOU TO VOTE ON YOUR COMMUNITY'S MOST IMPORTANT HEALTH INDICATORS.**

- Please read the list below.
- Decide which are the most important to your neighborhood and rank from 1 to 23, where 1 is most important, by filling out the right-hand column.
- Circle which neighborhood you live in (on the other side)
- When finished, raise your hand so your ballot can be collected.

**THANK YOU!**

HEALTH INDICATORS	YOUR RANKING	HEALTH INDICATORS	YOUR RANKING
Air quality		Openings in child care centers	
Babies born in "Baby-Friendly" facilities		People in jail	
Binge drinking		Physical activity	
Children's emergency department visits for asthma		Smoking	
Controlled high blood pressure		Sodium intake	
Fall-related hospitalizations		Sugary drinks	
High school graduation		Teenage pregnancy	
HIV viral suppression		Unmet medical need	
Homes with no maintenance issues		Unmet mental health need	
New HIV cases		Violence (assault hospitalizations)	
Obesity		Other (any other issue you would prioritize):	
Social cohesion (shared values and trust among neighbors)			



# Population Health Improvement Program

---

- Promotes the Triple Aim in NYC through stakeholder collaboration, data-driven prioritization, and development of local strategies to improve health equity
- Collaborative Model– DOHMH, Fund for Public Health in New York, UHF, and NYAM
- Multi- disciplinary Steering Committee facilitating multi-sector action planning
- Workgroups
  - DASH-NYC
  - Advanced Primary Care

# Putting It All Together

---

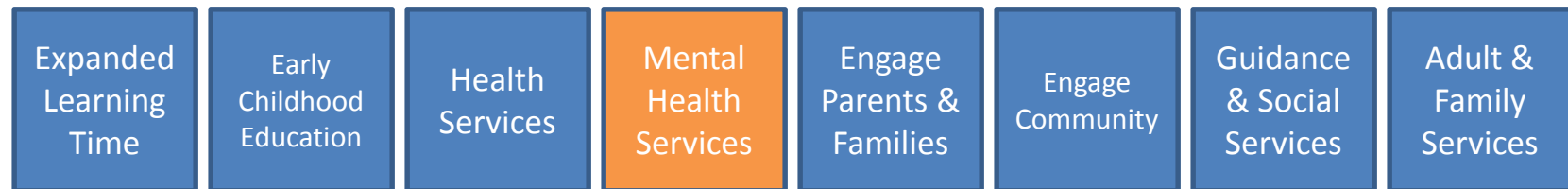
- The health system has a key role in creating equitable environments
- Where we do the work is just as important as how or why
- Today's public health problems have environmental and clinical solutions
  - Example - Partnering to reduce youth violence and trauma-exposure

# Working With the Health Care Delivery System

## **School-Based Mental Health**

---

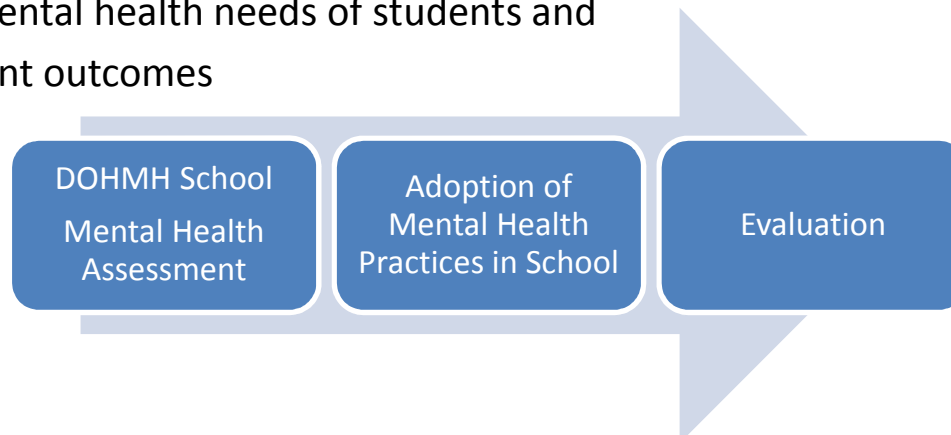
- Community Schools– Mayoral initiative targeting 130 high-need public schools across the city through multi-Agency collaboration and partnerships with CBOs
- DOHMH playing lead role in the administration of expanded Mental Health services



# DOHMH Model in Community Schools

---

- Goal– Develop a public health framework and process to determine needs and implement mental health services in schools
- Assist schools and CBOs in assessing the need for mental health services on 3 levels: *MH Promotion (Universal)*, *Prevention (Selective)*, *Treatment interventions (Targeted)*.
- Objectives– Allocate resources based on the needs and increase the adoption of evidence-based practices to
  - 1) Address the mental health needs of students and
  - 2) Improve student outcomes



# Community Schools and DSRIP

---

- 4 PPSs working jointly on DSRIP Project to Strengthen Mental Health & Substance Abuse Infrastructure across systems (MHSA project)
  - PPS's—Bronx Health Access, Bronx Partners, Community Care Brooklyn, OneCity Health
- MHSA project aims to strengthen the capacity of school-based support staff by:
  - Strengthening school staff members' skills in identifying behavioral indicators of MHSA issues and implementing preventive interventions
  - Addressing mild- to moderate-acuity MHSA needs in the school setting
  - Properly referring youth with higher acuity needs to MHSA professionals

**Advancing  
Health Equity**

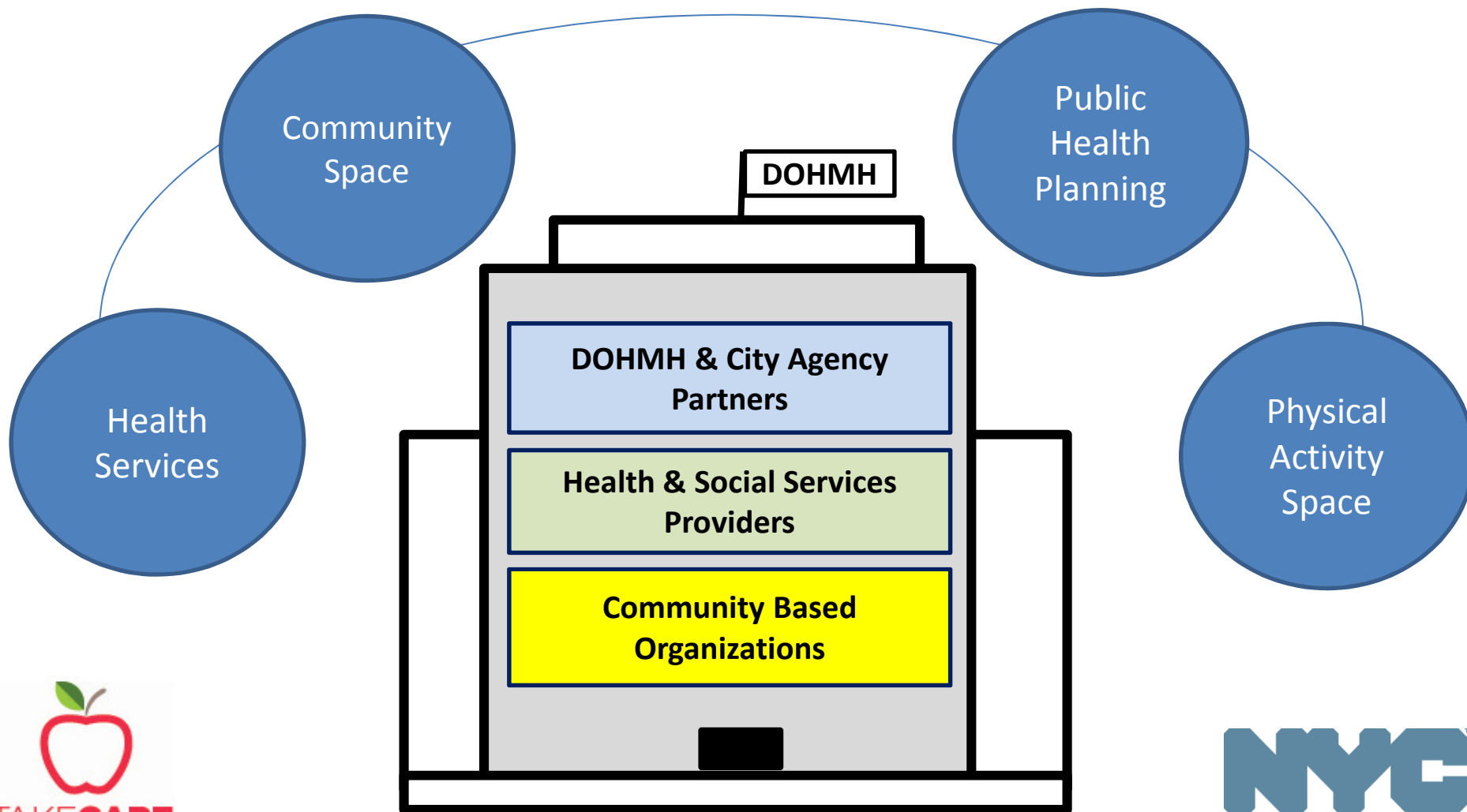
**Invest in Key  
Neighborhoods**



# Neighborhood Health Action Centers

## Collaborative Approach to Neighborhood Health Planning

---





# East Harlem's Healthy Neighborhoods Initiative

- NYSHF-funded collaboration with NYCDOHMH, NYAM, Mt. Sinai, and the Dept. of City Planning
- Fighting chronic disease through 4 priority areas: healthy food access, built environment, community-led lifestyle interventions, and economic development

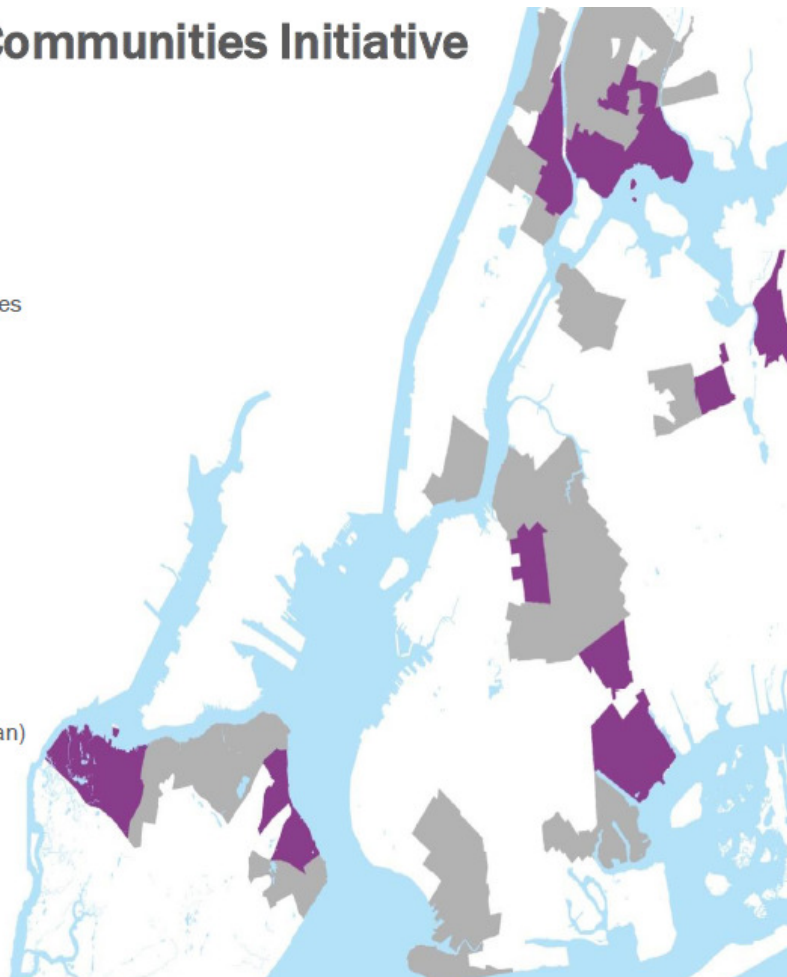
# Building Healthy Communities

## Building Healthy Communities Initiative Neighborhoods

-  BHC Initiative Neighborhoods
-  Community Parks Initiative Zones



- Brownsville (Brooklyn)
- Bed-Stuy (Brooklyn)
- Canarsie (Brooklyn)
- Mott Haven (Bronx)
- Hunts Point (Bronx)
- Morrisania (Bronx)
- East Harlem North (Manhattan)
- Central Harlem North-Polo Grounds (Manhattan)
- Flushing (Queens)
- Corona (Queens)
- Mariners Harbor (Staten Island)
- Stapleton-Rosebank (Staten Island)



# Summary

---

- As a city we are only as healthy as our most challenged community
- Investing in key neighborhoods corrects injustice
- Addressing Social Determinants of Health improves health outcomes
- Planning with communities is essential for sustainable change