



Incorporating Health Into Physical Needs Assessments

Elizabeth Zeldin
May 25th, 2017



Incorporating Health Into Physical Needs Assessments

Physical Needs Assessment (PNA)



- Range of possible upgrade options
- General cost and benefit overview

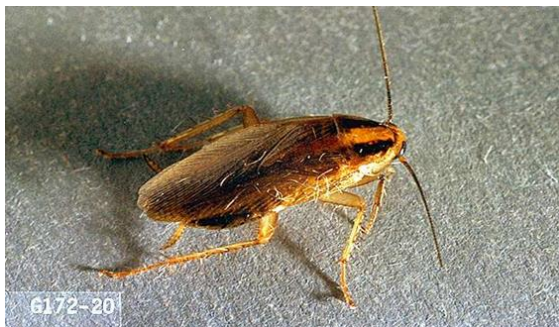
Incorporating Health Into Physical Needs Assessments

Greening Affordable Housing

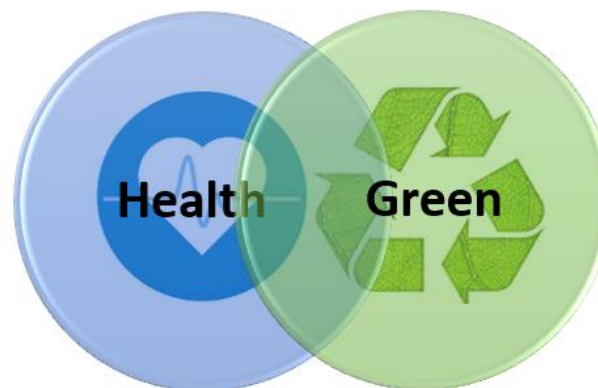
- Enterprise Green Communities normalizes green construction
- PNA → GPNA
 - savings-to-investment ratio
 - some health components



Incorporating Health Into Physical Needs Assessments



- Evidence between green and health is growing
- Enterprise Green Communities Criteria
 - *Pests, Ventilation, Active Design, Resident Engagement*



Incorporating Health Into Physical Needs Assessments

Creation of the Health Overlay



- Designed by Enterprise, LISC, HPD, and DOHMH
- Guided by health and building science leaders
- Piloted by PNA providers and owners

Incorporating Health Into Physical Needs Assessments

Considerations for the Health Overlay

- Cost-effectiveness
- Feasible process for building engineers

Incorporating Health Into Physical Needs Assessments

New Developments

- Piloted in two buildings
- Incorporated into Integrated PNA tool
- Refining with owner focus groups
- Will be holding trainings

Incorporating Health Into Physical Needs Assessments

Implementation Challenges

- Scaling financing solutions – health not easily monetized
- Ongoing healthy maintenance practices