

Transformation: From Health Care to *Total Health*

Population Health Summit III

December 7, 2015

John Vu

Vice President, Strategy

Community Benefit, Research and Health Policy

Kaiser Permanente

Kaiser Permanente Overview

Fully integrated care delivery and health plan system

- ❖ 10 million+ members
- ❖ 17,000+ physicians
- ❖ 175,000+ employees (48,000 nurses)
- ❖ 38 hospitals
- ❖ 608 medical offices and outpatient facilities
- ❖ 8 states and Washington D.C.



Kaiser Permanente Mission

To provide high quality affordable health care services and improve the health of our members and the communities we serve.



We're #1 in Care



Leads the nation in the most No. 1's in Effectiveness of Care Measures



All Kaiser Permanente regions received 5-Star ratings, the highest possible rating



Kaiser Permanente is the only health plan in California to earn the highest rating for overall quality of care in the Healthcare Quality Report Card



27 Kaiser Permanente facilities honored as 'Top Performer' for Quality and Safety by The Joint Commission



KP's California health plans receive top rating -- 4 Stars -- for quality and service



Kaiser Permanente Hospitals are the safest in the nation



Kaiser Permanente has received 36 Stage 7 Hospital Awards for successful electronic health record implementation



10 Kaiser Permanente Hospitals listed among the nation's elite in annual "Best Hospitals" rankings



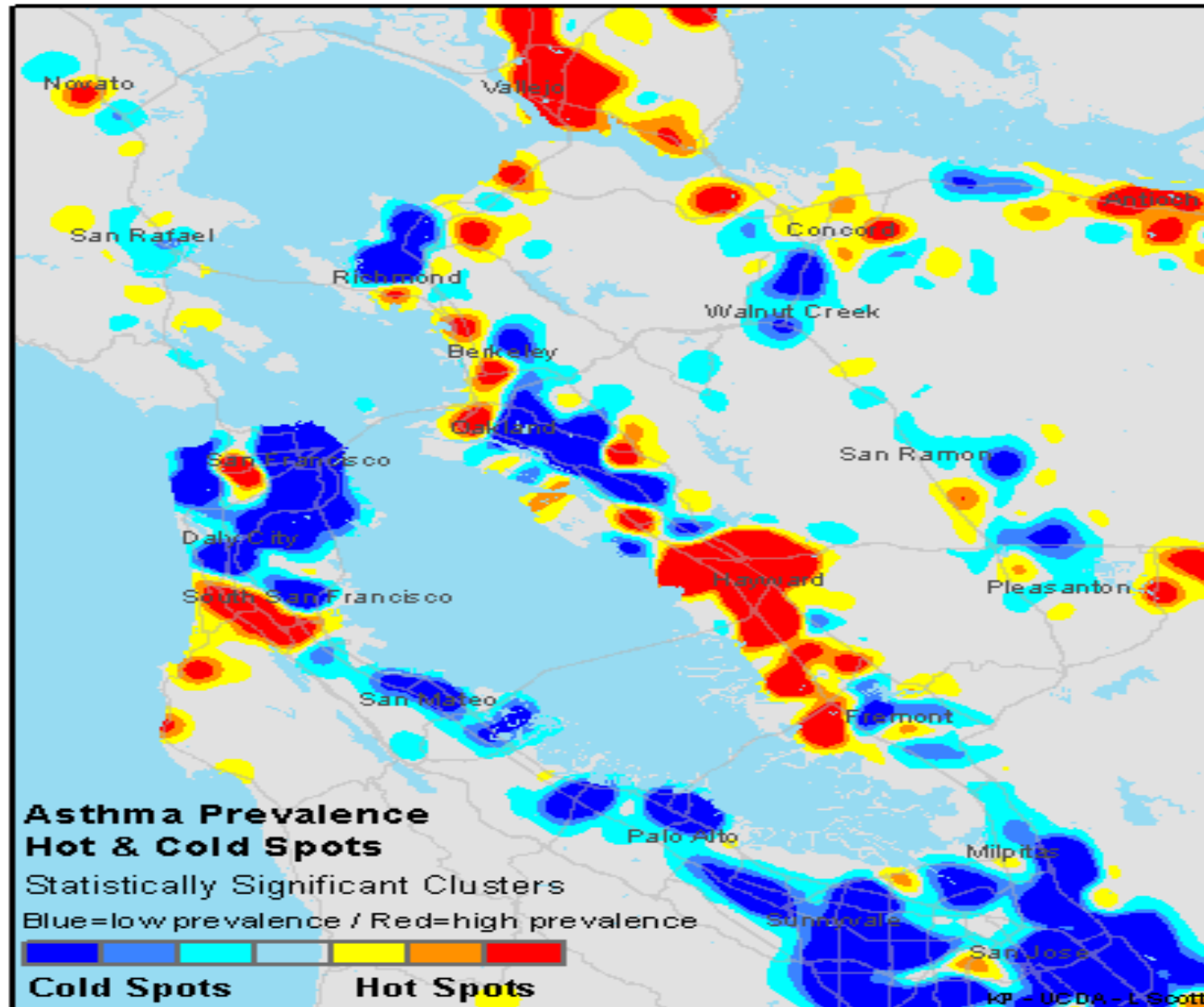
The KP flagship and Every Body Walk! apps have received Silver Web Health Web Awards recognizing high-quality digital resources for consumers



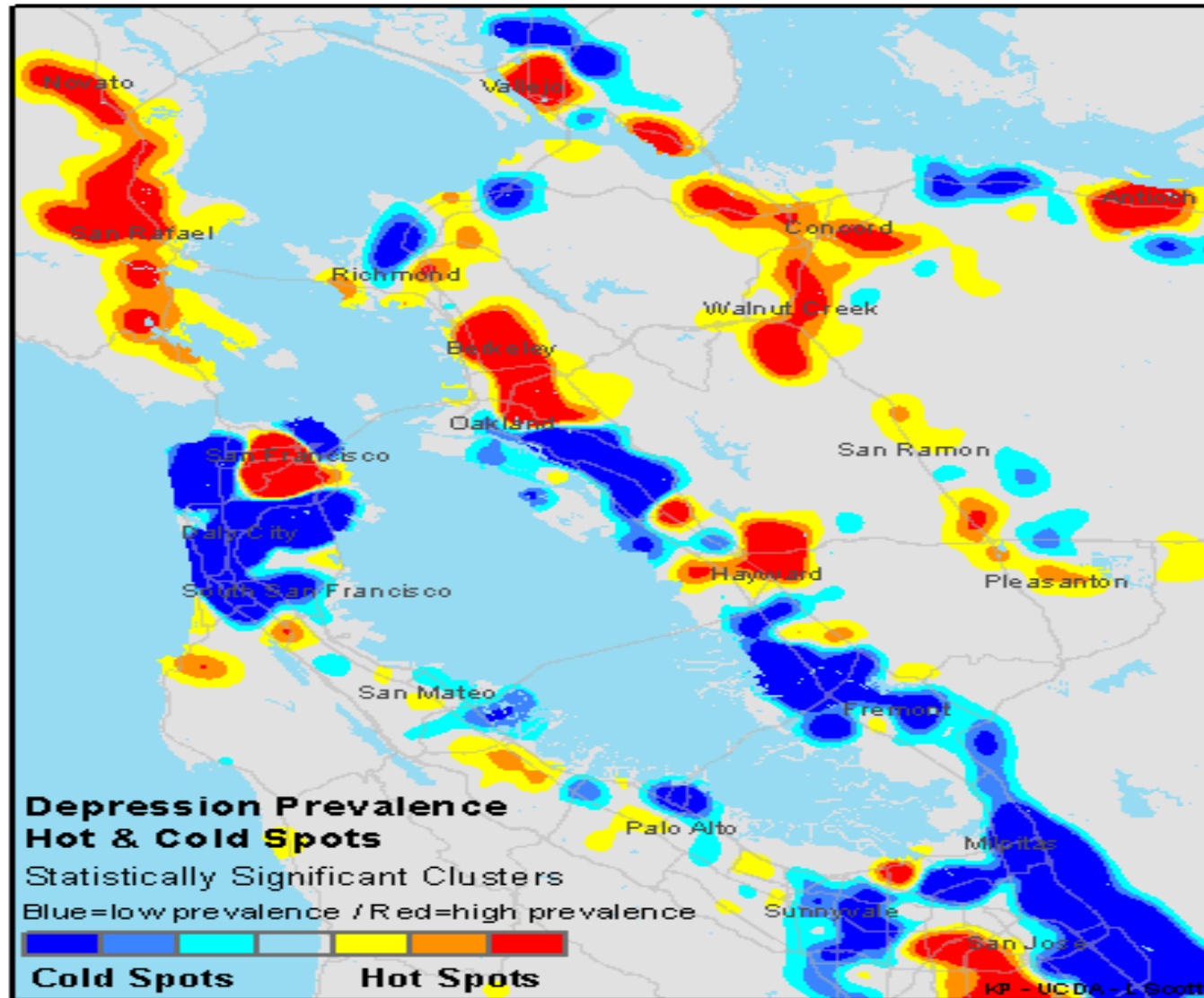
KP won five 2013 eHealthcare Leadership awards, including the highest honor for Organizational Commitment, and the 2013 Hospital Website Transparency Award with Distinction

**But are we #1 in
HEALTH?**

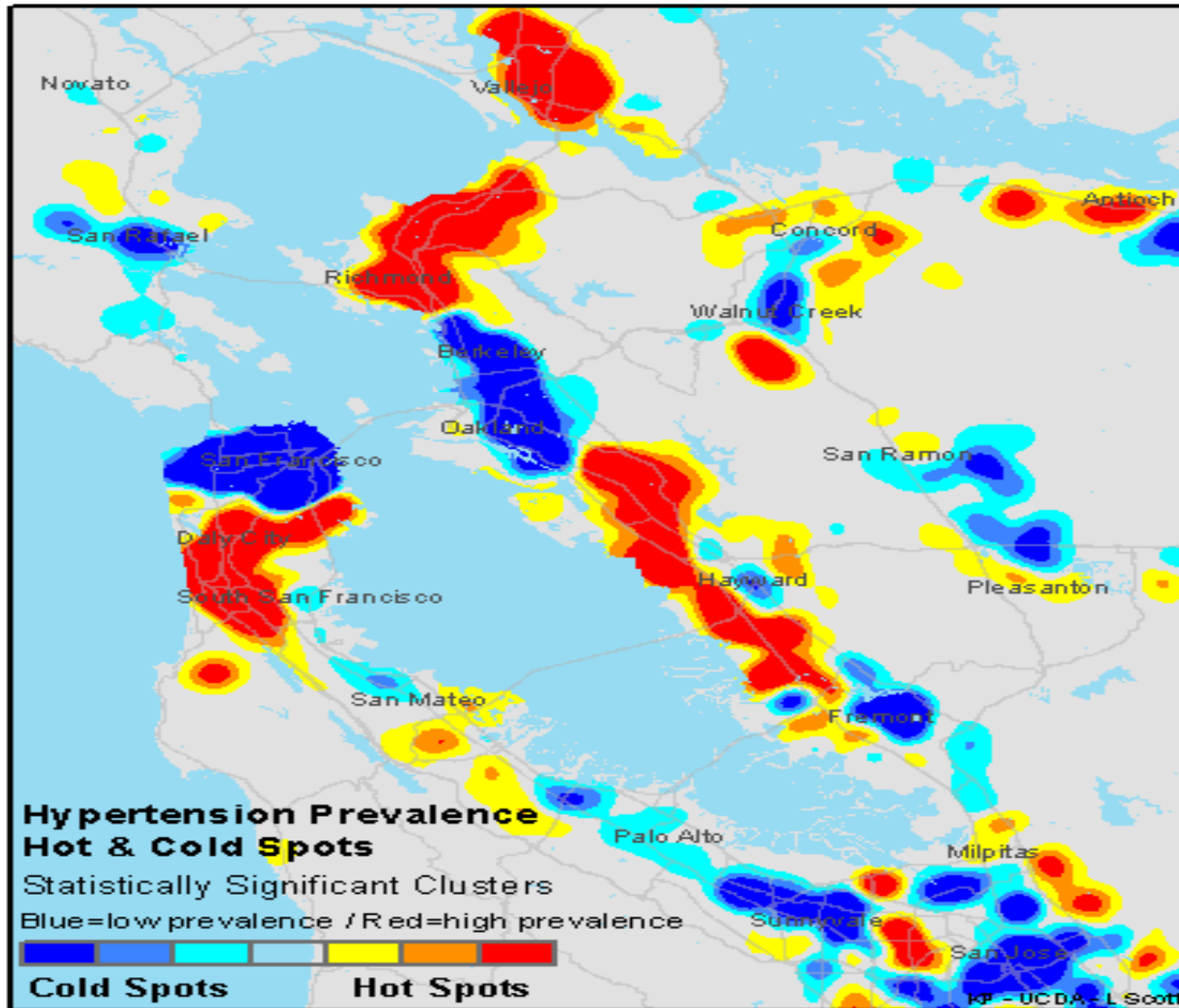
#1 for Everyone, Everywhere? - ASTHMA



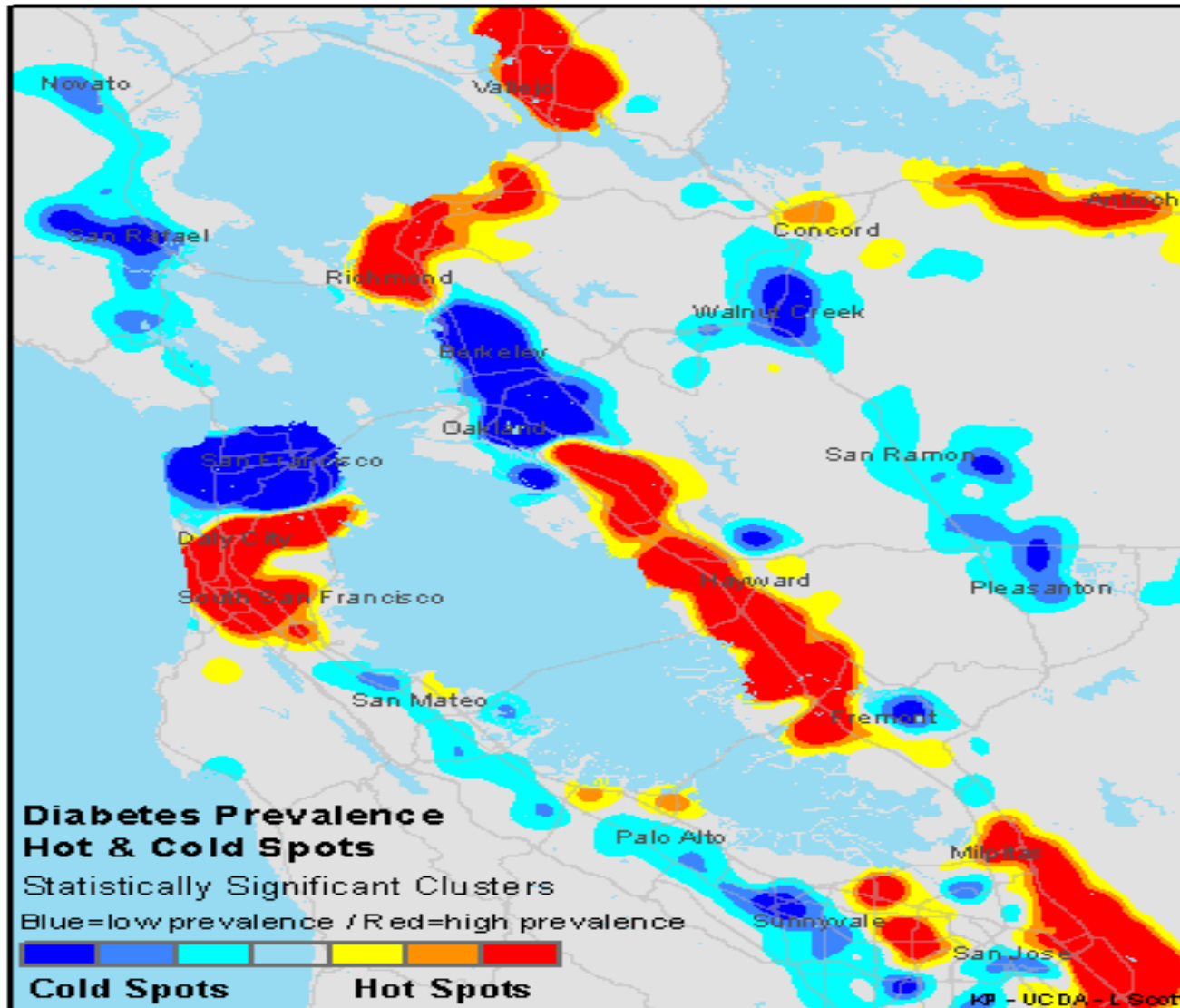
#1 for Everyone, Everywhere? - DEPRESSION



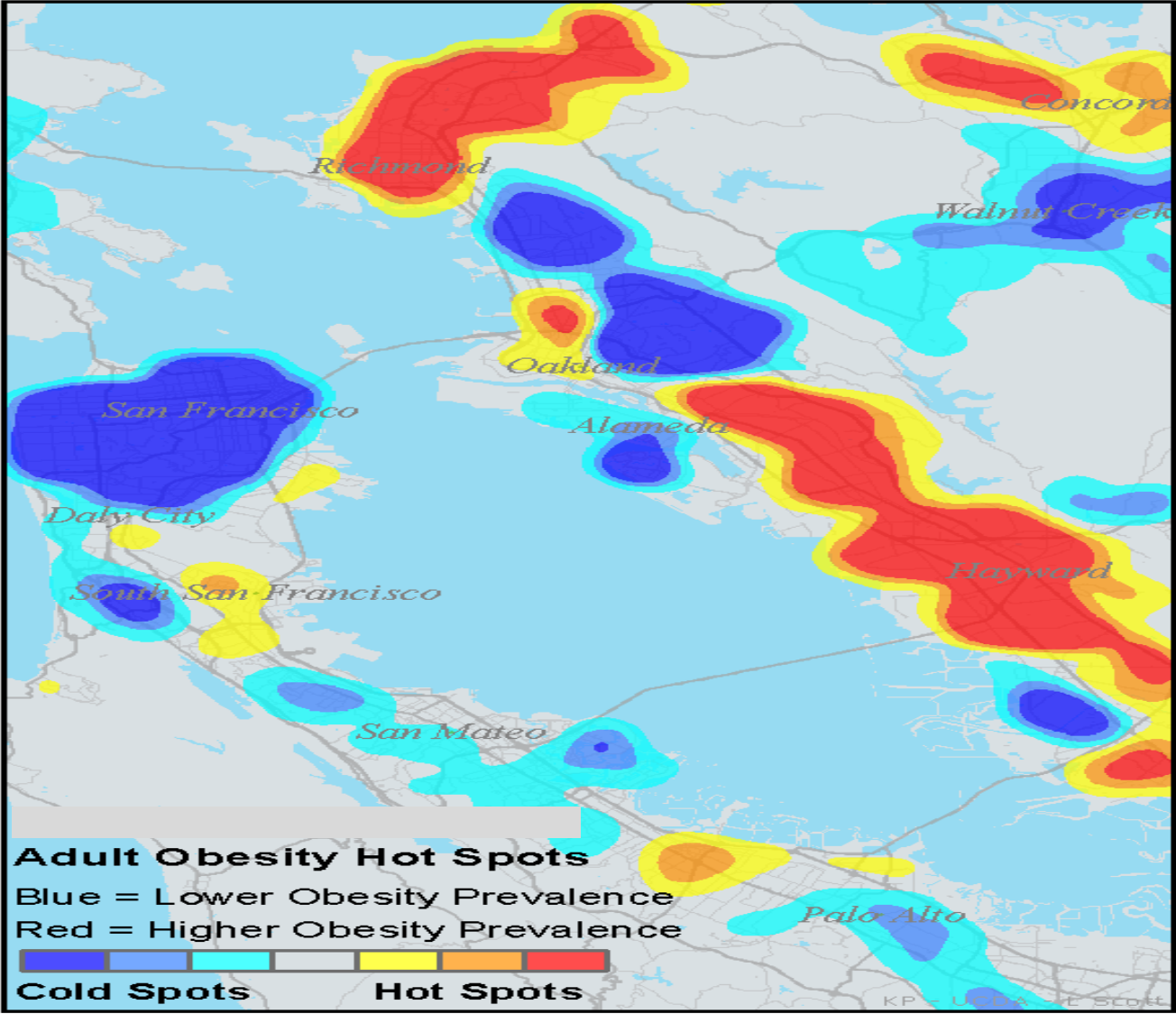
#1 for Everyone, Everywhere? -- HYPERTENSION



#1 for Everyone, Everywhere? -- DIABETES



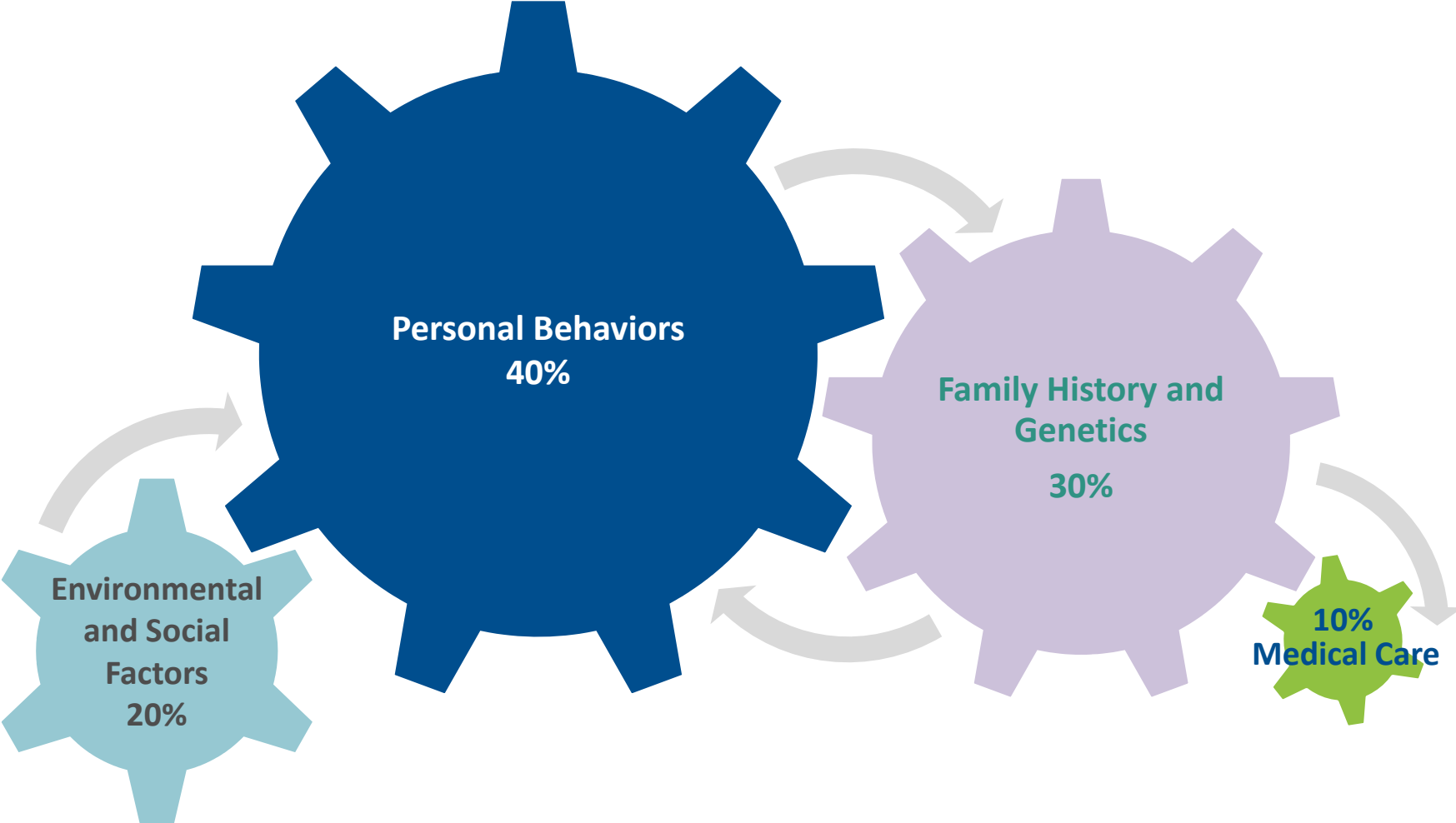
...are we creating health for all?



What shapes HEALTH?

Many Factors Shape Health

...of which medical care is one component.



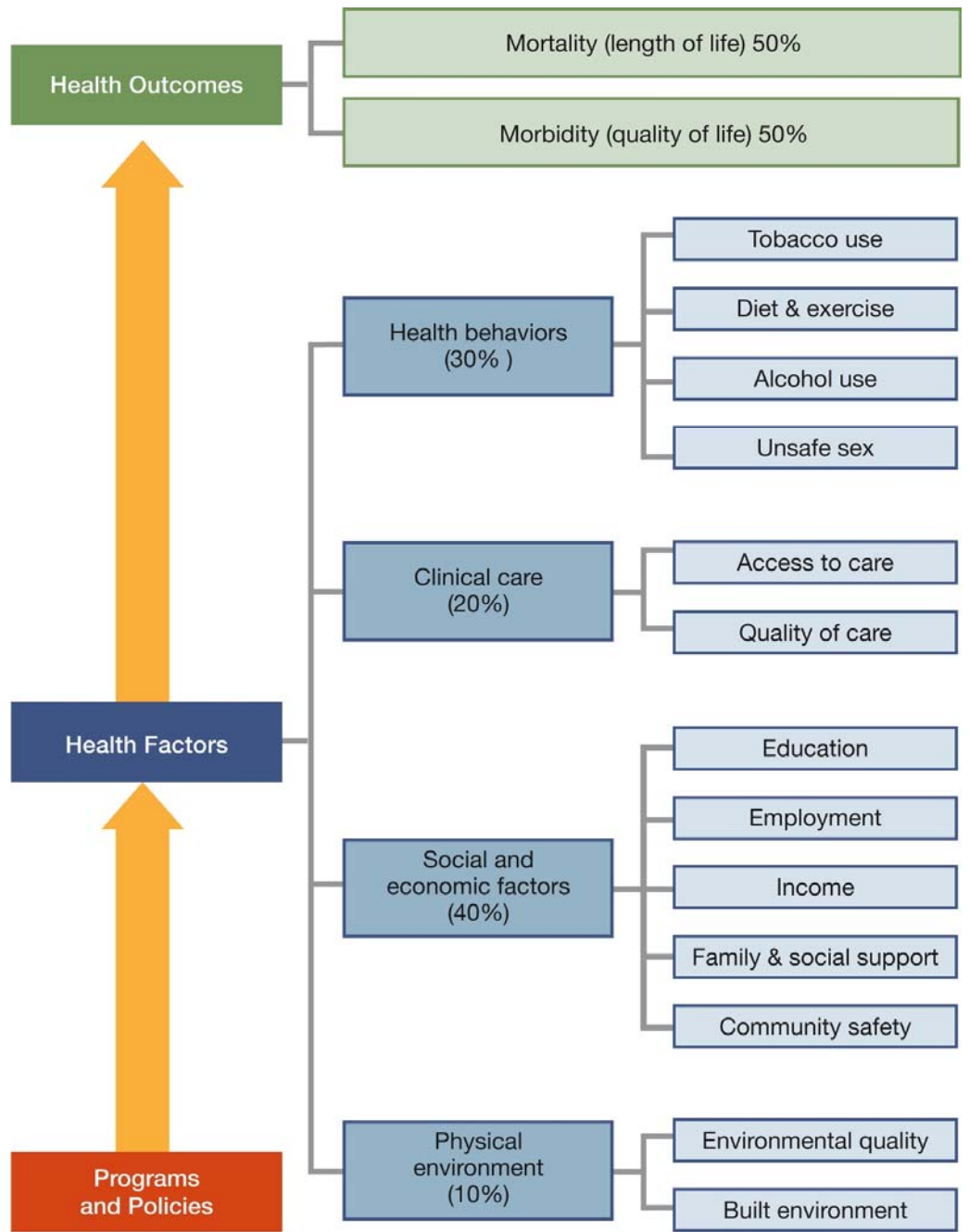
Source: McGinnis et al, Health Affairs, 2002

What role can we play in addressing all the non 'medical care' factors?...

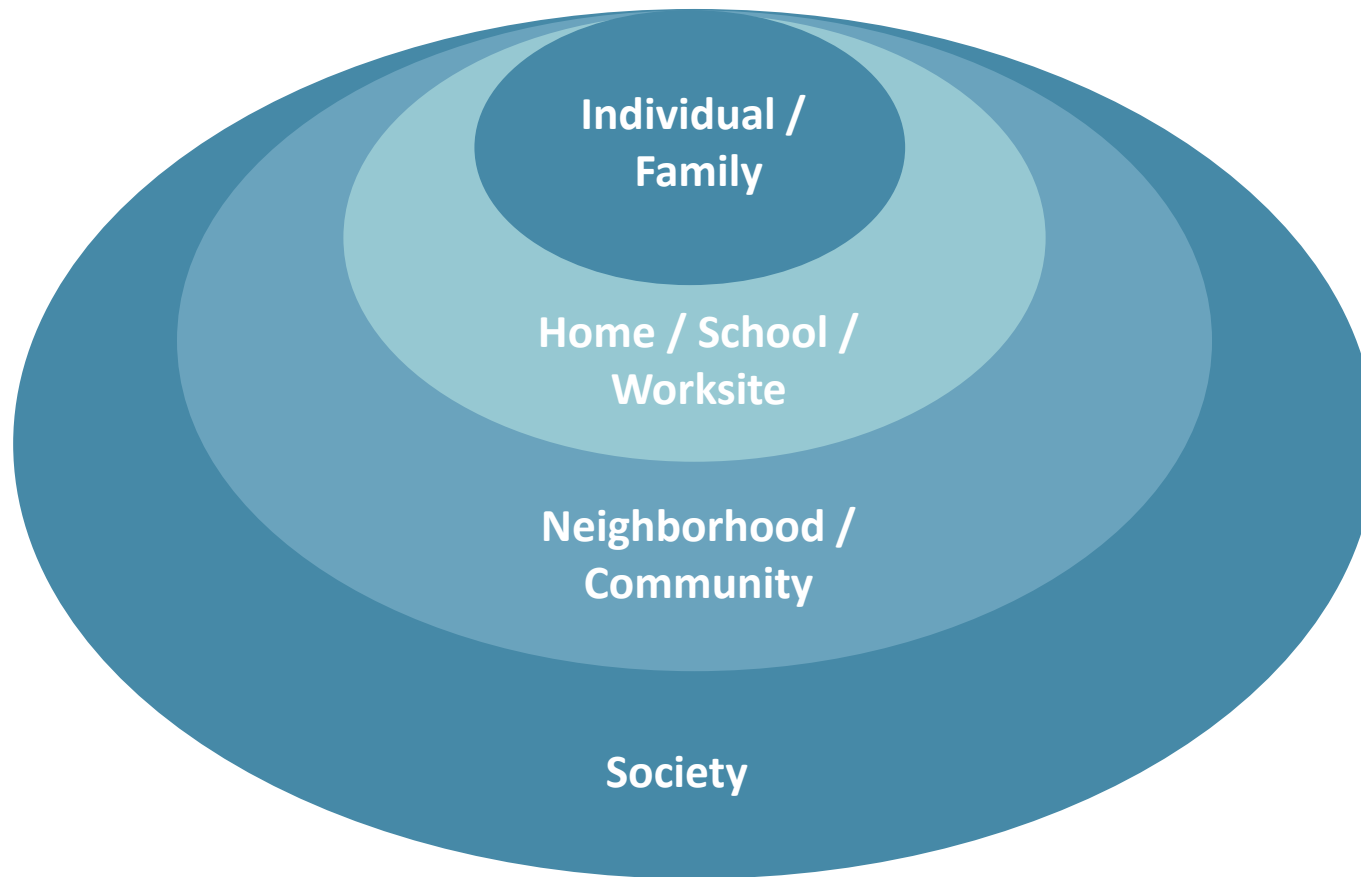
Defining Health



University of Wisconsin
Population Health Institute



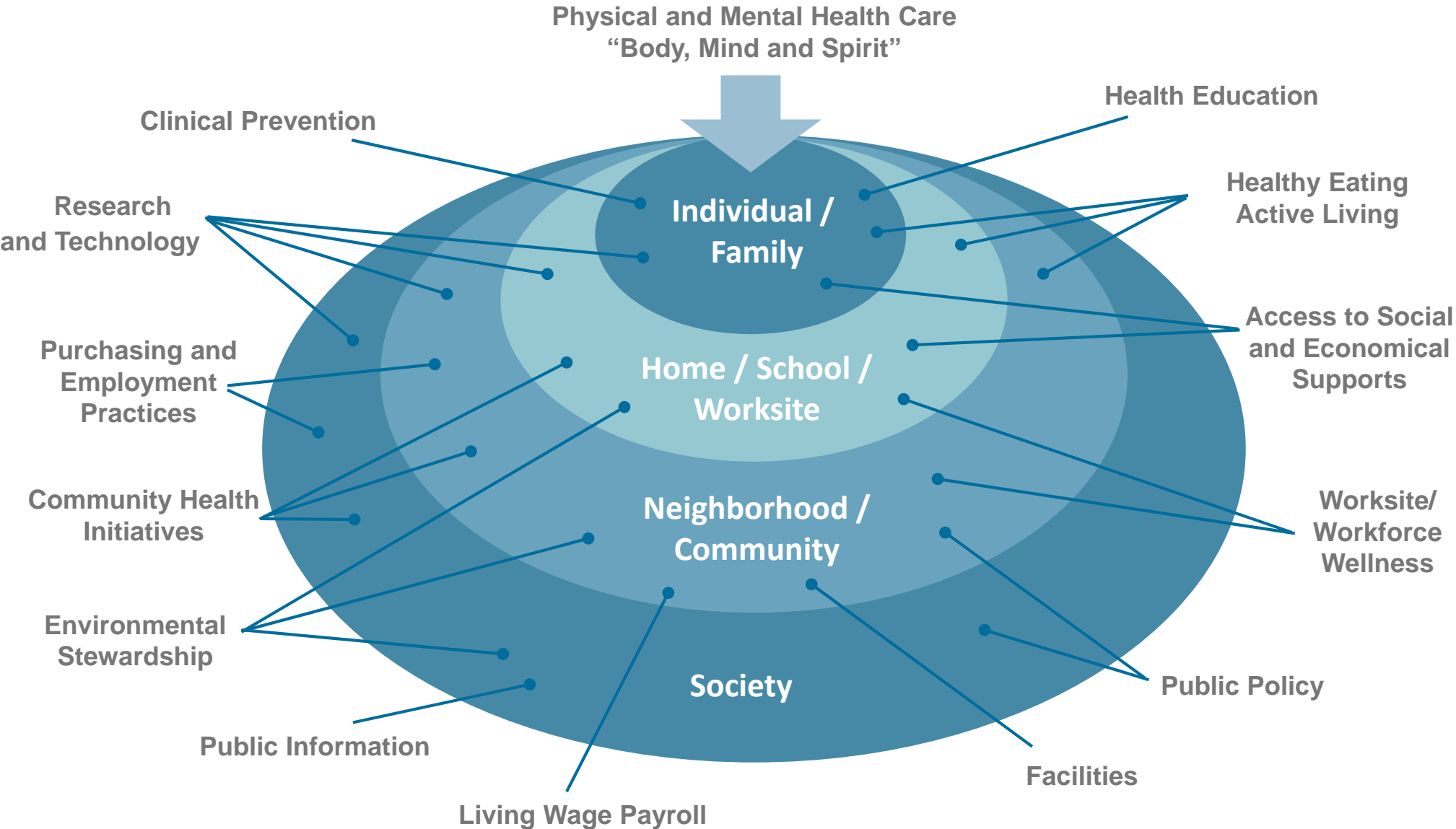
How do we address health at all levels?



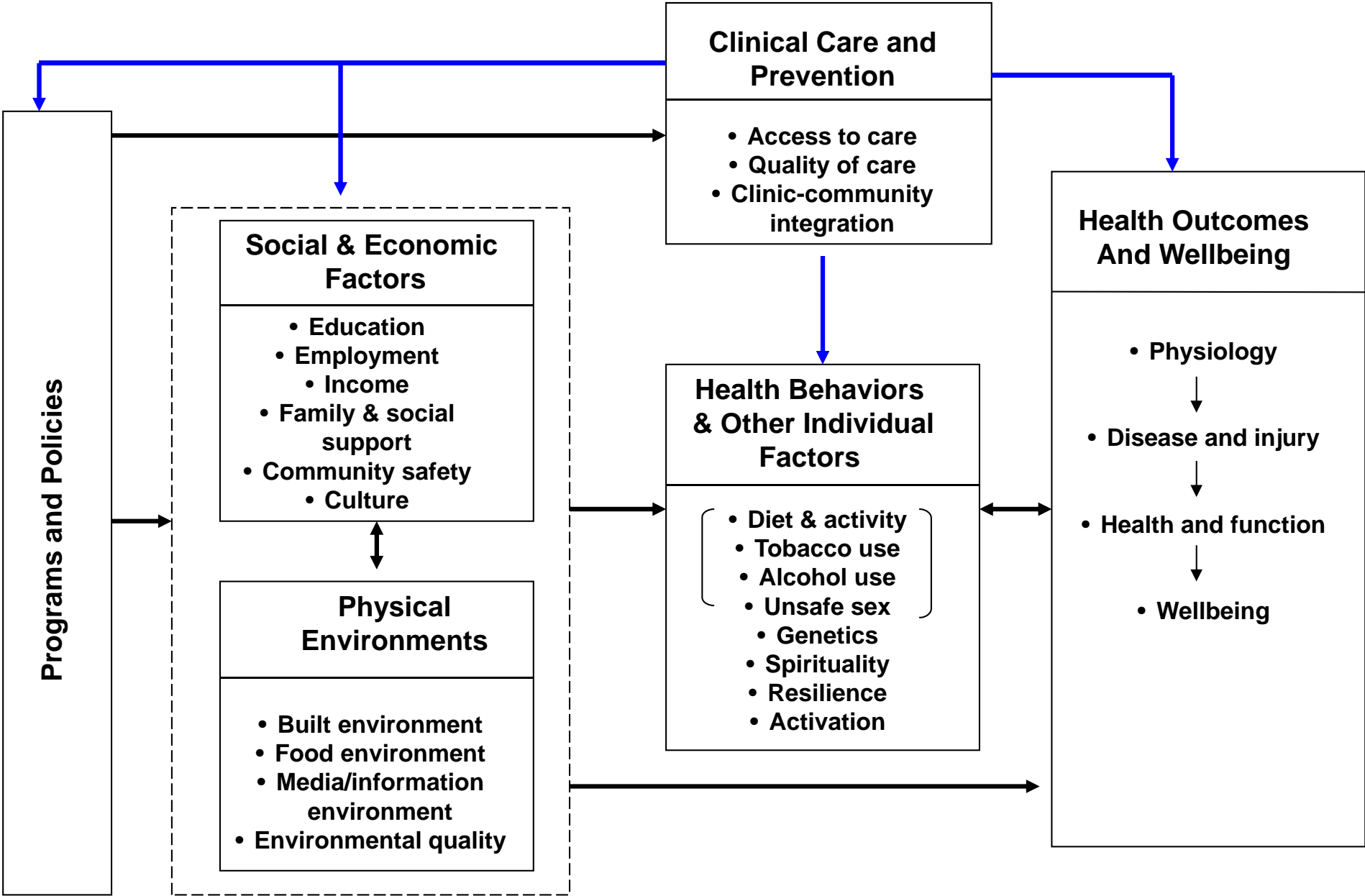
Strategic Decision: Deploy and Connect Our Assets for TOTAL HEALTH

Deploying Kaiser Permanente Assets for Total Health

Bringing together our mission, brand, knowledge and capabilities.



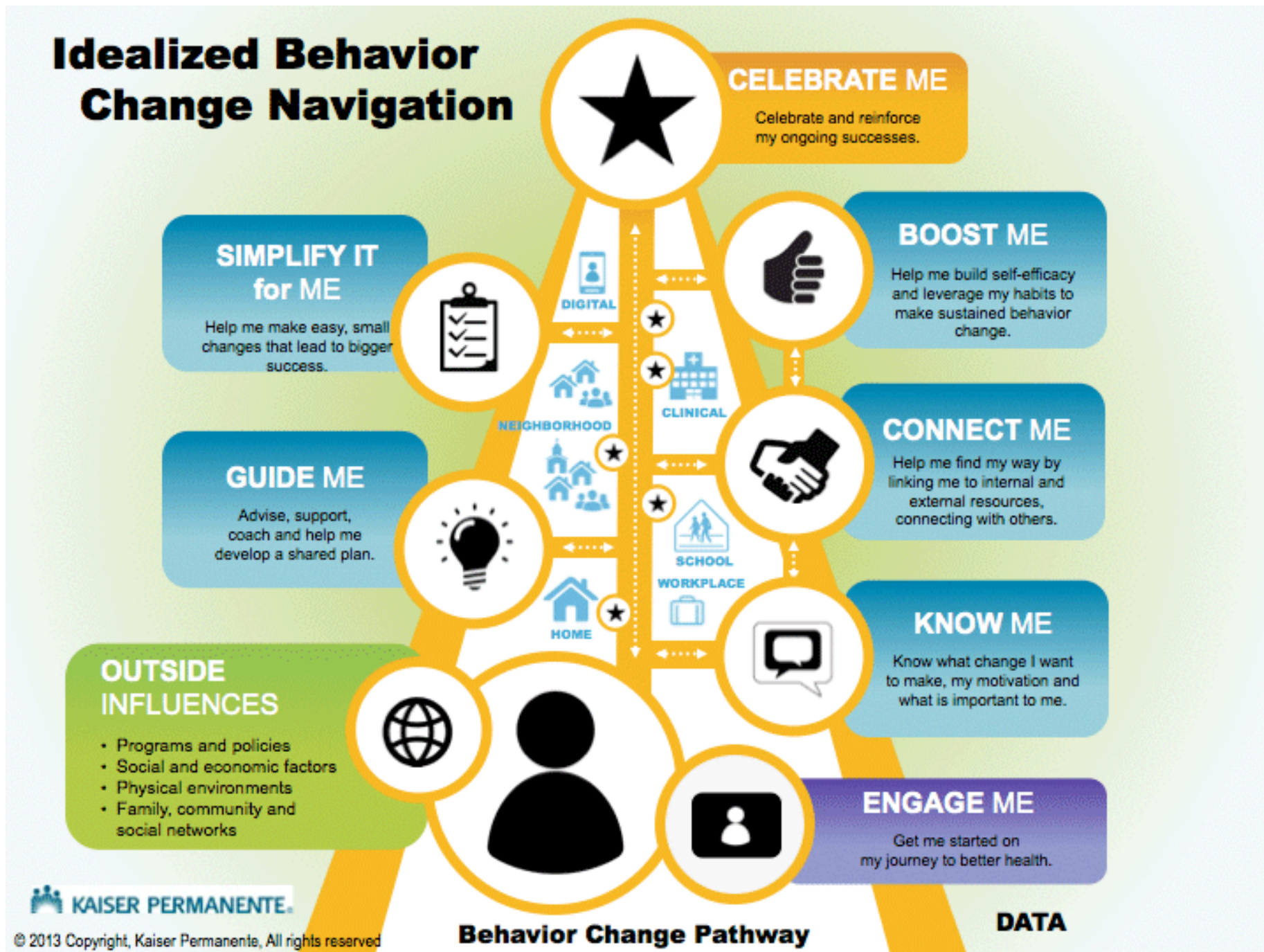
An Analytical View for Total Health



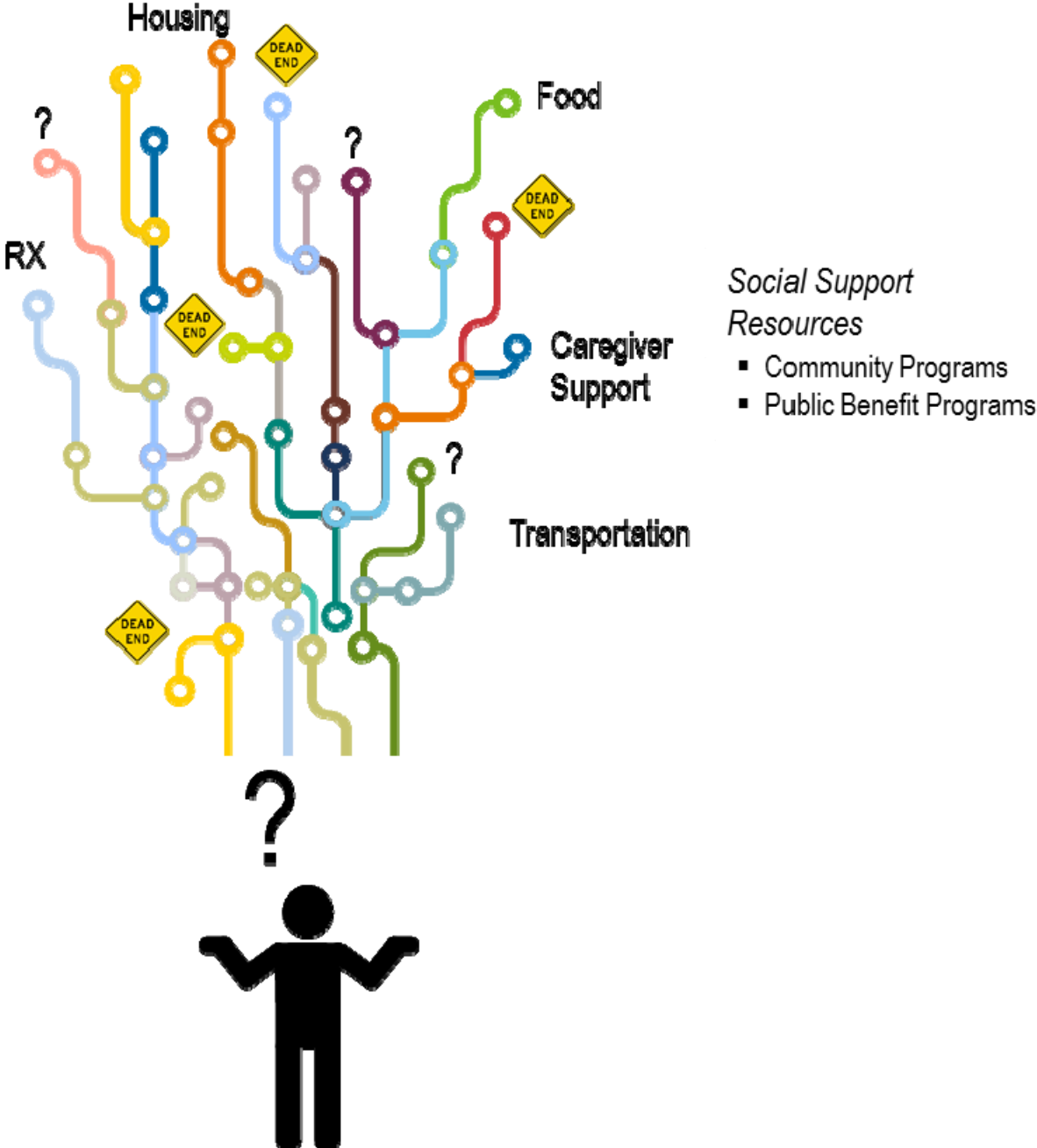
Settings: Home Workplace School Neighborhood Clinic Virtual

Activating Total Health

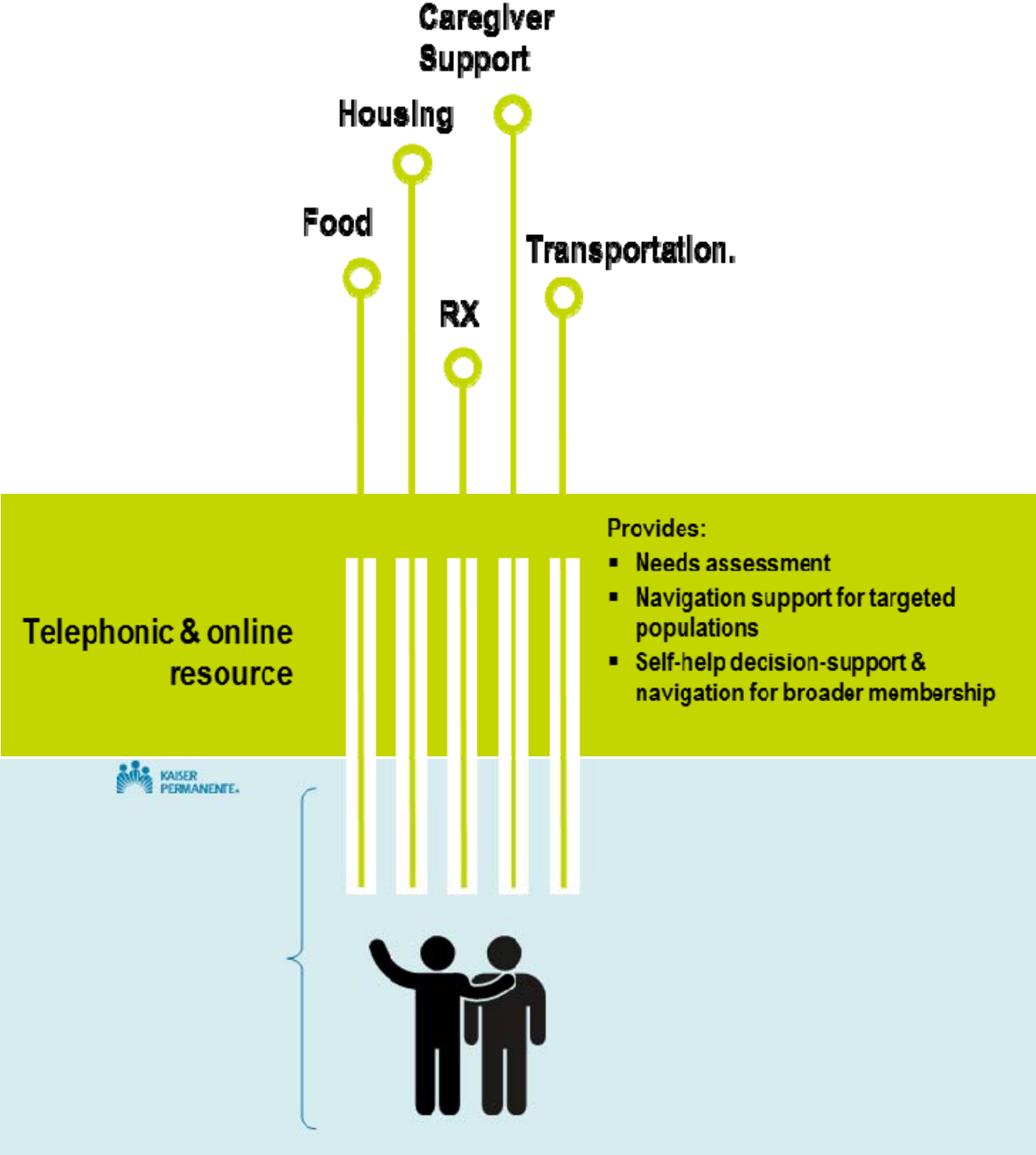
Behavior Change Strategy



Supports for Social, Economic and Behavioral Needs

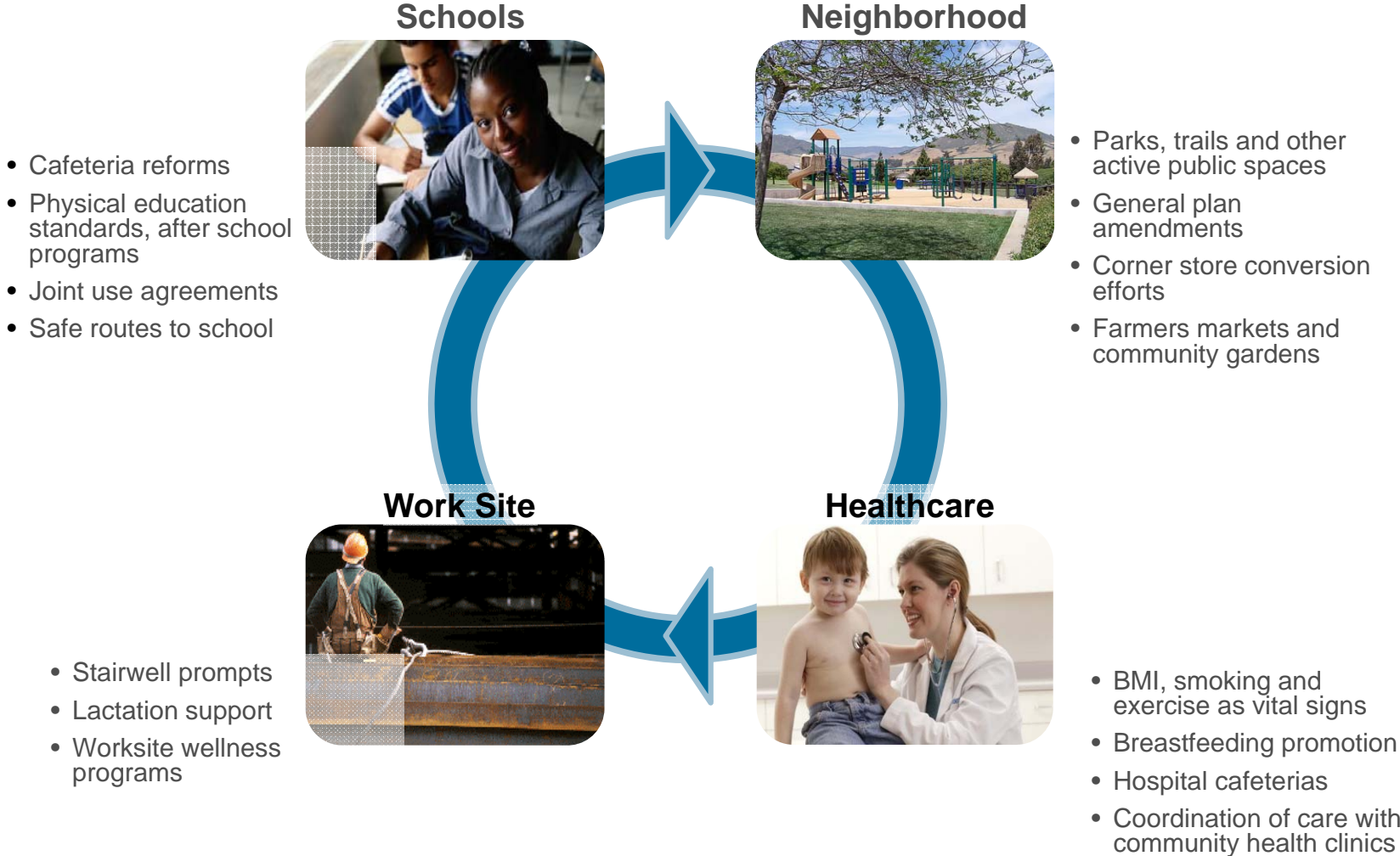


Supports for Social, Economic and Behavioral Needs



Community Health Strategies

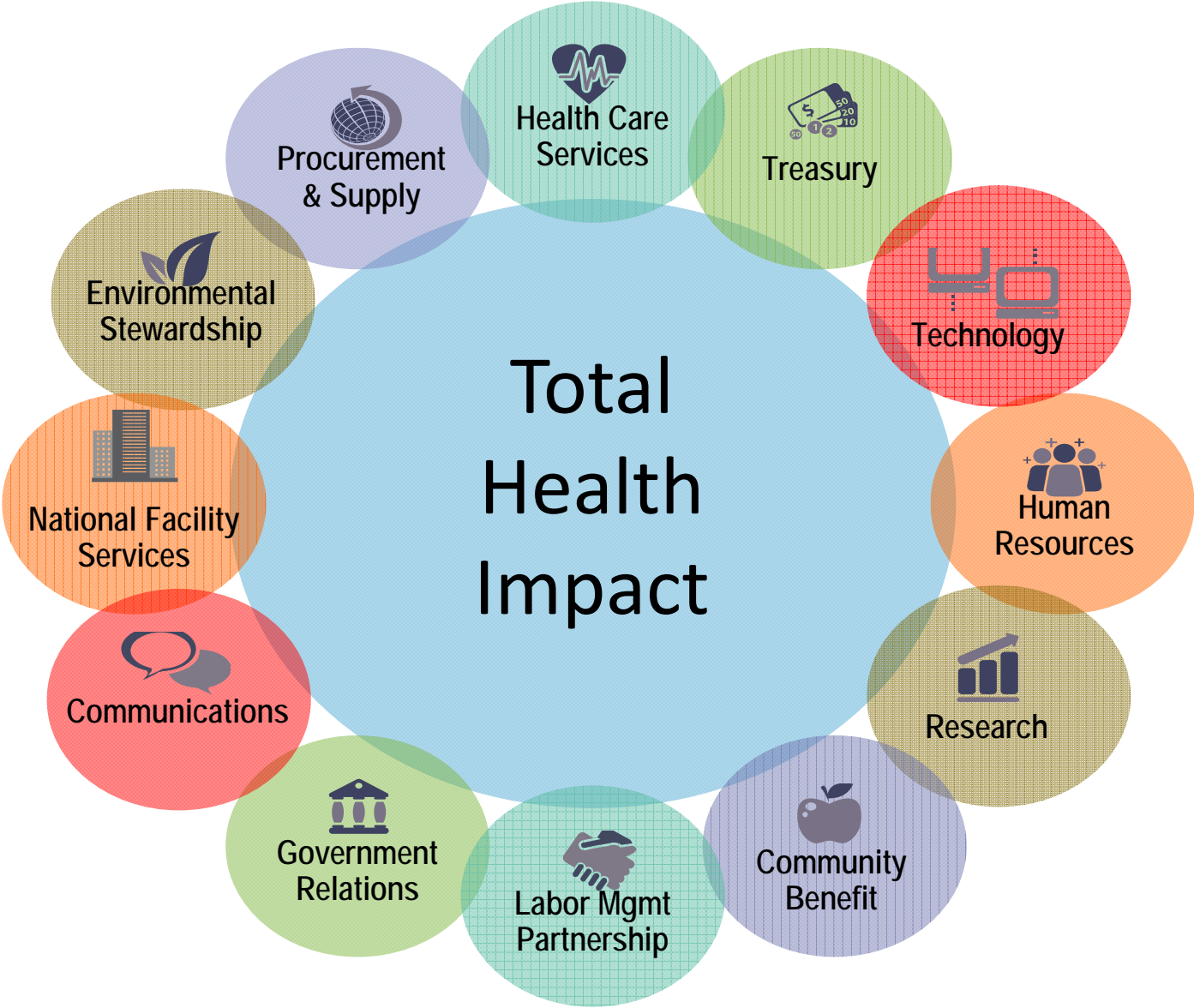
Community Health Strategies to Make the Healthy Choice the Easy Choice



Focus on Determinants of Health



“All In” Strategy for Health



Understanding the Economic, Environmental and Social Impact of Everything We Do

Understanding our Impact: Sustainable Food Purchasing



- Strong evidence that antibiotic use in food-producing animals transmits resistant bacteria resulting in negative impacts on public health

- **Sustainable food purchasing:** Reducing antibiotic-resistant bacteria in environment through purchases of sustainable foods (antibiotic-free meat and vegetables)

Leveraging Partnerships and Scaling Up for Greater Impact



chna.org



HEALTHY EATING
ACTIVE LIVING
CITIES
CAMPAIGN



