

New York State's County Health Rankings in National Perspective

September 2019





Contents

- 1** Executive Summary

- 2** Background

- 3** NYSHealth Analysis

- 5** Results

- 16** Conclusions

- 17** Methods

- 18** Appendix A: New York County Rankings

- 29** Appendix B: U.S. State Rankings



Executive Summary

The **County Health Rankings** project was designed to measure various health indicators across all U.S. counties and evaluate the performance of these counties relative to each other within a state.

This analysis examined the rankings in 2010 and 2019 to determine the changes taking place within New York State, as well as how New York State counties compare with counties across the country. This report provides a new perspective on the health of the 62 counties in New York over the past decade, and provides policymakers with additional means of benchmarking county performance.

Findings:

- New York State counties generally ranked healthier relative to counties in other states, although there was a slight decline in their relative rankings over time.
- The spread between healthy and less healthy New York State counties did not change significantly between 2010 and 2019.
- Few counties in New York State dramatically improved or worsened their rankings within the state.
- Other states with healthier outcomes and smaller disparities across counties suggest that there is room for improvement in New York State.



Background

The County Health Rankings have been released annually since 2010 and report the performance of the nation's counties¹ across a range of more than 30 health measures. **Health Outcomes**, which represent the current state of health in a community, comprise five measures:

1. Premature death
2. Self-reported health
3. Poor mental health days
4. Poor physical health days
5. Low birthweight

These measures are reported individually and combined into a composite score that is ranked to represent overall county health.

The County Health Rankings rank counties within each state as a way to make the results meaningful for local policymakers. The rankings are used by public health stakeholders to prompt community health assessments, guide goal-setting for community health improvement, and communicate public health wins and areas for improvement to the public. Users of the County Health Rankings have also relied on the reports to provide comparable data for grant applications or to support budget increases for public health-related programming.

¹ In 2010, the County Health Rankings included 3,017 of the nation's 3,141 counties. In 2019, they included 3,081 of 3,143 counties. Because some counties are sparsely populated, a small proportion was excluded from the rankings each year.



NYSHealth Analysis

The rankings are calculated by state to allow for easy comparison among counties within a state. A limitation to this approach is that public health stakeholders cannot see how their state's counties perform among all counties nationally. For example, if a county ranks as the healthiest within its own state, but that state's overall health is declining over time, its ranking provides an incomplete picture. That county's health outcomes may be lagging when put in the national context, but the within-state ranking would obscure that trend. As a result, local policymakers could grow complacent about needed investments to promote health and improve health outcomes.

To provide a national context to the performance of New York State's counties in health outcomes, this report addresses the following questions:

1. How did New York State counties rank in health outcomes compared with counties in other states?
2. Was the disparity between healthier and less healthy counties in New York State greater or less than that observed in other states?
3. Did New York State counties' national performance change over time?
4. Which New York State counties ranked consistently among the healthiest and least healthy counties in 2010 and 2019?
5. Which counties in New York State substantially improved or declined in health outcomes from 2010 to 2019?

Note on interpreting national percentiles. For this report, New York State's health outcomes are presented as national percentiles. National percentiles range from 0 to 100, with **lower values indicating better health and higher values indicating worse health**. For example, in 2010, Putnam County's national percentile in health outcomes was 3.7, meaning that only 3.7% of counties nationally (112 counties) were healthier than Putnam County. Conversely, the national percentile for Bronx County was 71.9, indicating that 71.9% of counties (2,169 counties) nationally were healthier than the Bronx.

To visualize New York State counties' performance compared with counties in other states, the median value and interquartile range of county national percentiles were calculated by state for each health outcome measure and the composite health outcomes score.



NYSHealth Analysis (continued)

Six states with 10 or fewer counties were omitted from the analysis of state performance: Delaware, District of Columbia, Connecticut, Hawaii, New Hampshire, and Rhode Island.

More details about the data and methods used in the analysis are provided in the **Methods** section on page 17.



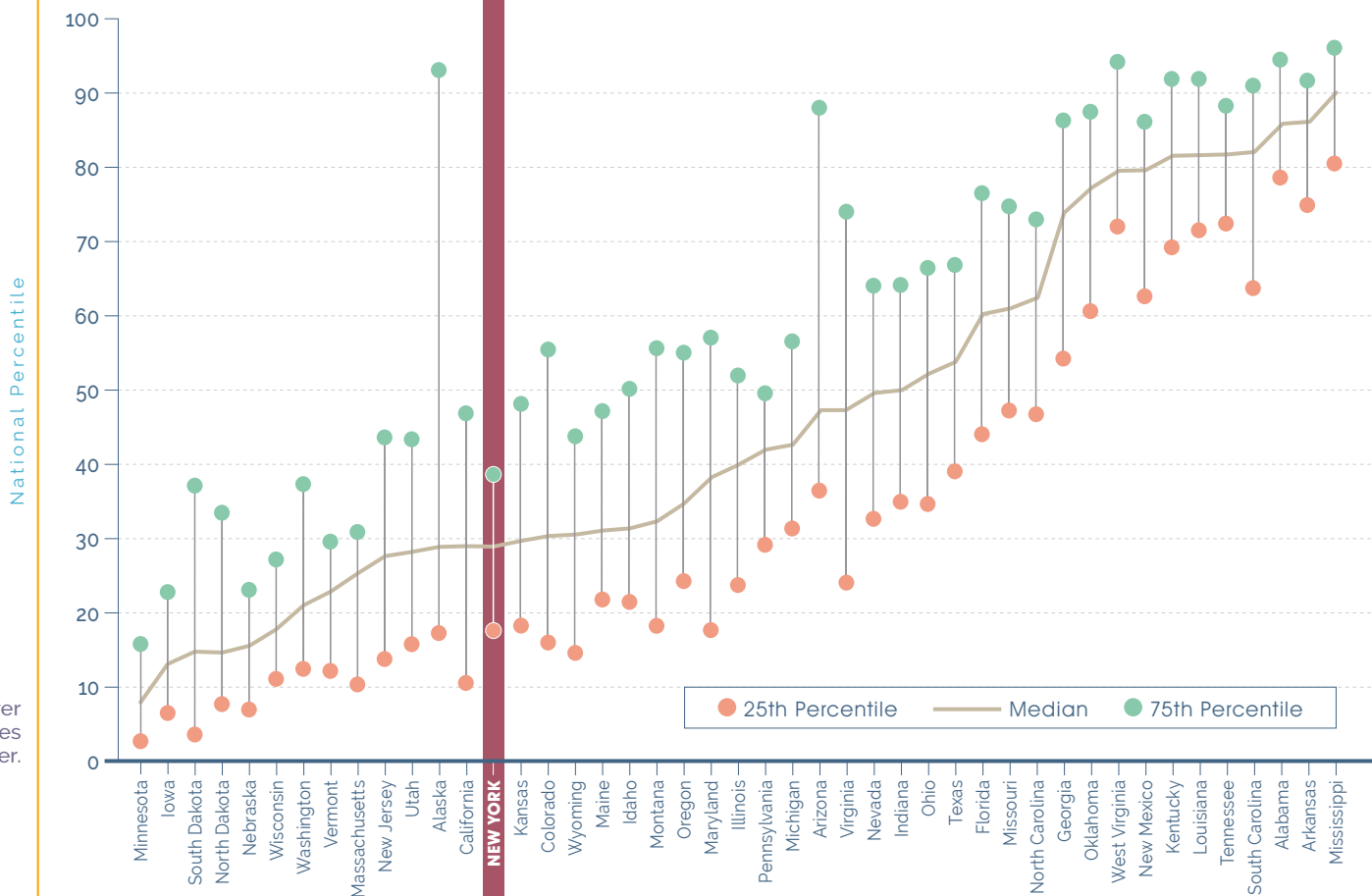
Results

How did New York State counties rank in health outcomes compared with counties in other states?

Overall Health Outcomes. New York State counties generally performed well, relative to counties in other states, in overall health outcomes (**Exhibit A**):

- New York State counties generally ranked healthier overall than counties in other states, as reflected in the health outcomes composite measure. The median national percentile for health outcomes among New York's counties was 28.9 in 2019. This indicates that 31 of the 62 counties in New York were in the top 28.9% of counties nationally.
- Based on the median national percentiles, New York State ranked 14th out of 45 states in health outcomes.

EXHIBIT A: Overall Health Outcome County Percentiles by State (2019)



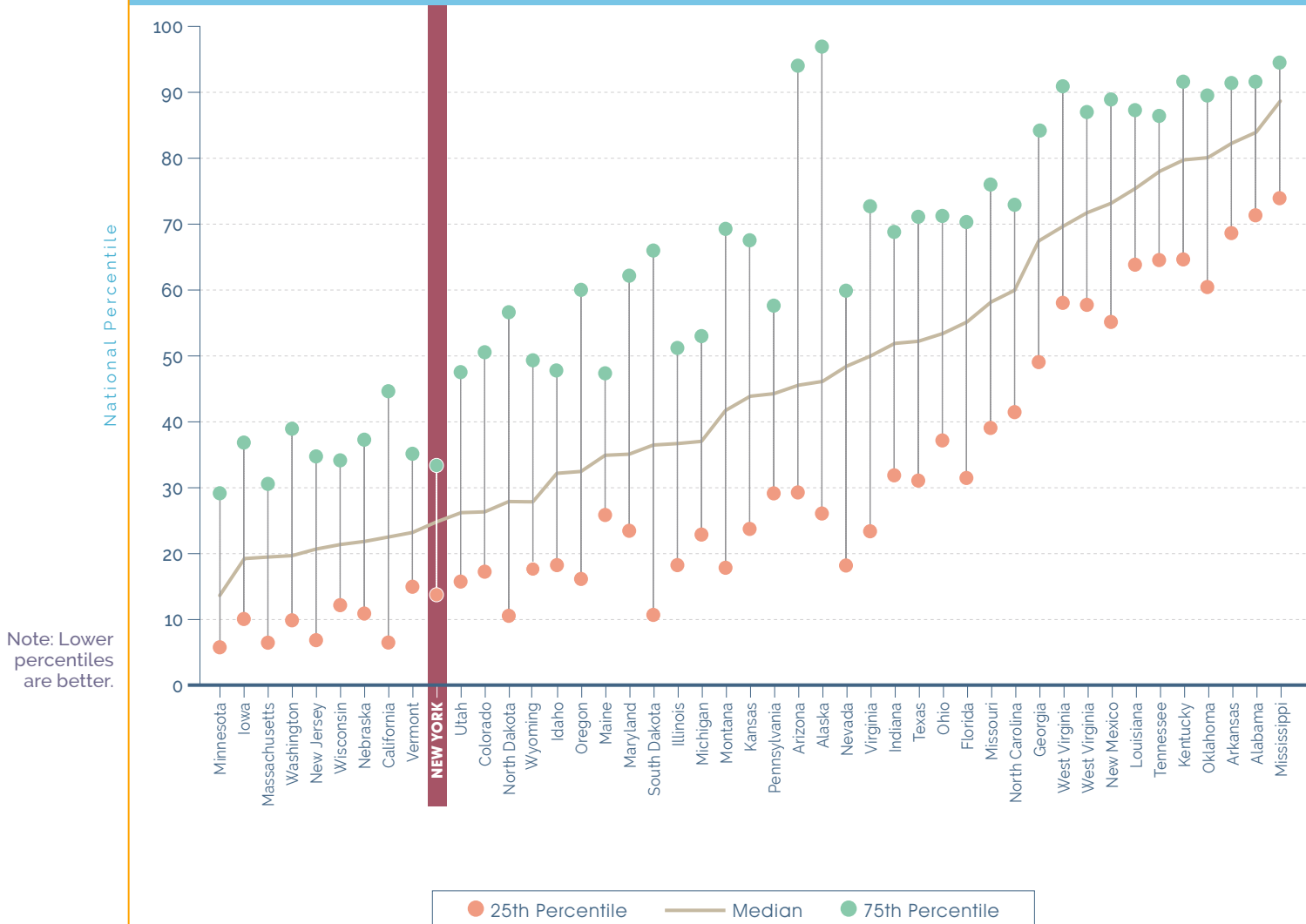
Note: Lower percentiles are better.



Results (continued)

Years of Premature Life Lost. Although New York State counties ranked healthier overall compared with counties in other states, their performance on individual health outcome measures was mixed (**Exhibit B**). New York State counties tended to perform well on the measure of premature deaths, with a median percentile ranking of 24.9 in 2019. New York State ranked 10th of 45 states for premature deaths, as half of New York counties (31 out of 62) ranked in the top quartile of all counties nationally.

EXHIBIT B: Years of Premature Life Lost County Percentiles by State (2019)

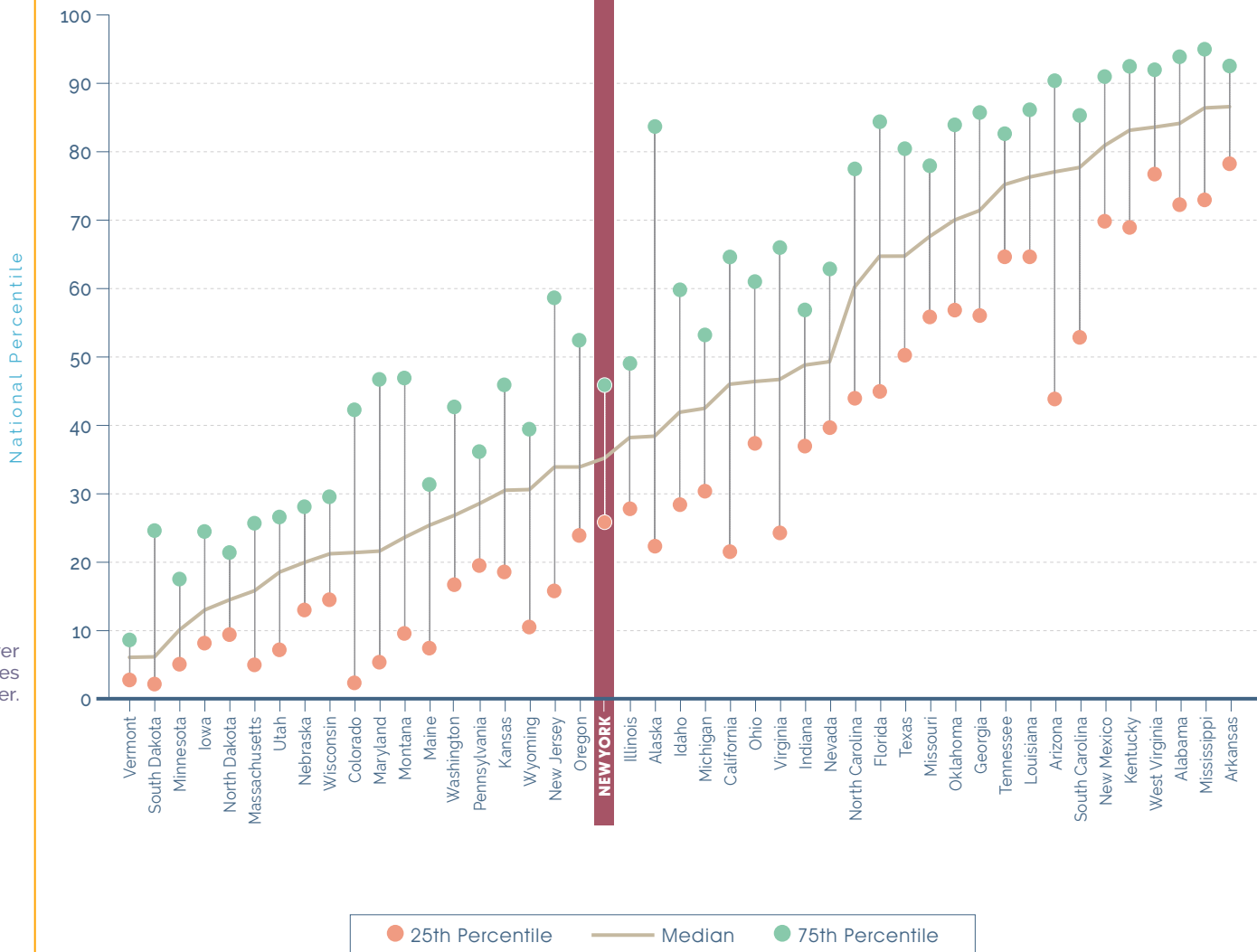




Results (continued)

Self-Reported Health. New York State performed closer to the middle of the U.S. state distribution on other health outcome measures (**Exhibit C**). On self-reported health—the most reliable measure of morbidity included in the rankings—the New York State county median percentile was 35.2 in 2019. New York State ranked 20th out of 45 states.

EXHIBIT C: Self-Reported Health County Percentiles, by State (2019)

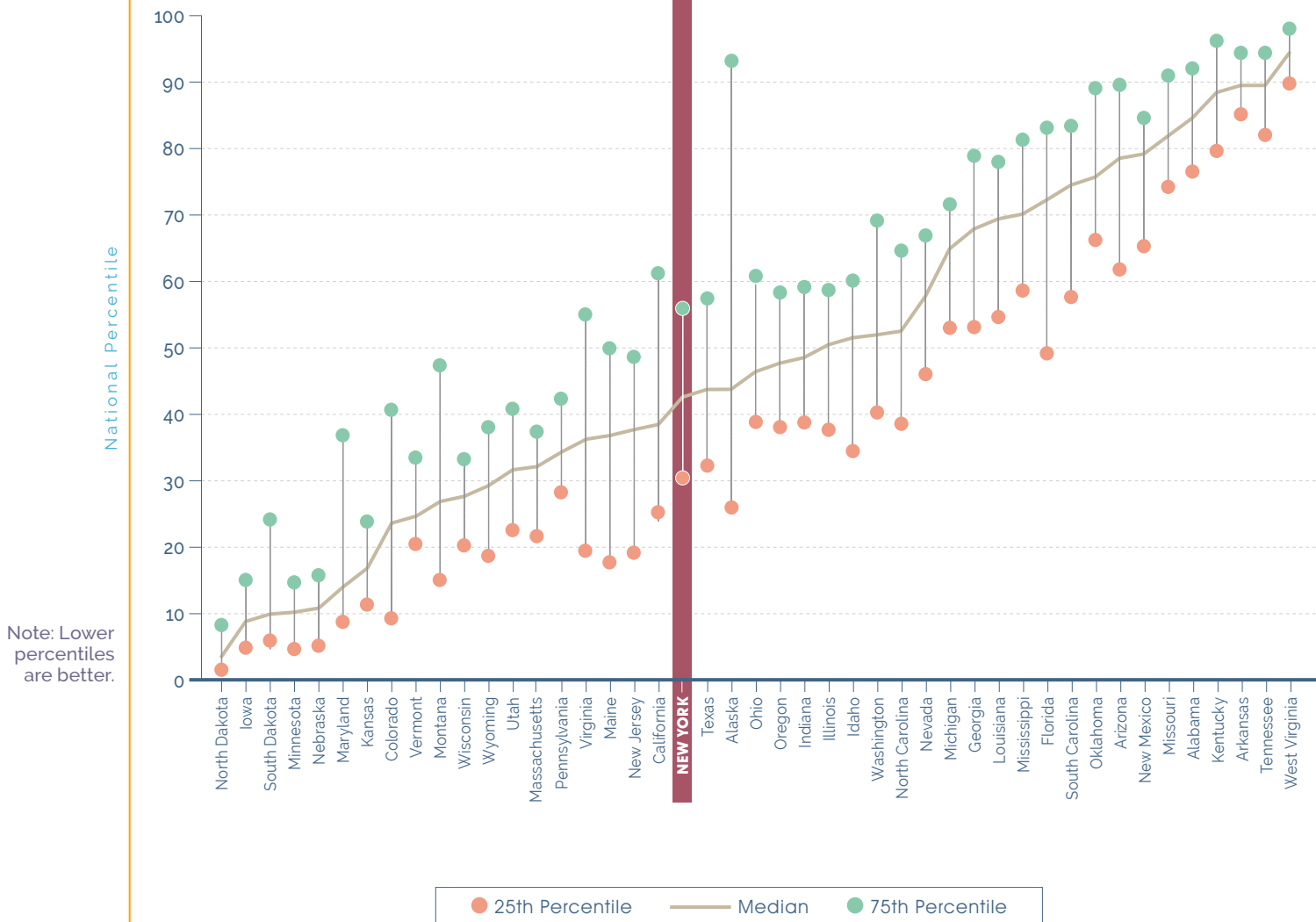




Results (continued)

Physical and Mental Health. In both poor physical health and poor mental health days, New York State counties' median percentiles also place the State at 20th out of 45 states (**Exhibits D & E**). The median national percentiles for New York State were 42.5 for poor physical health and 49.7 for poor mental health.

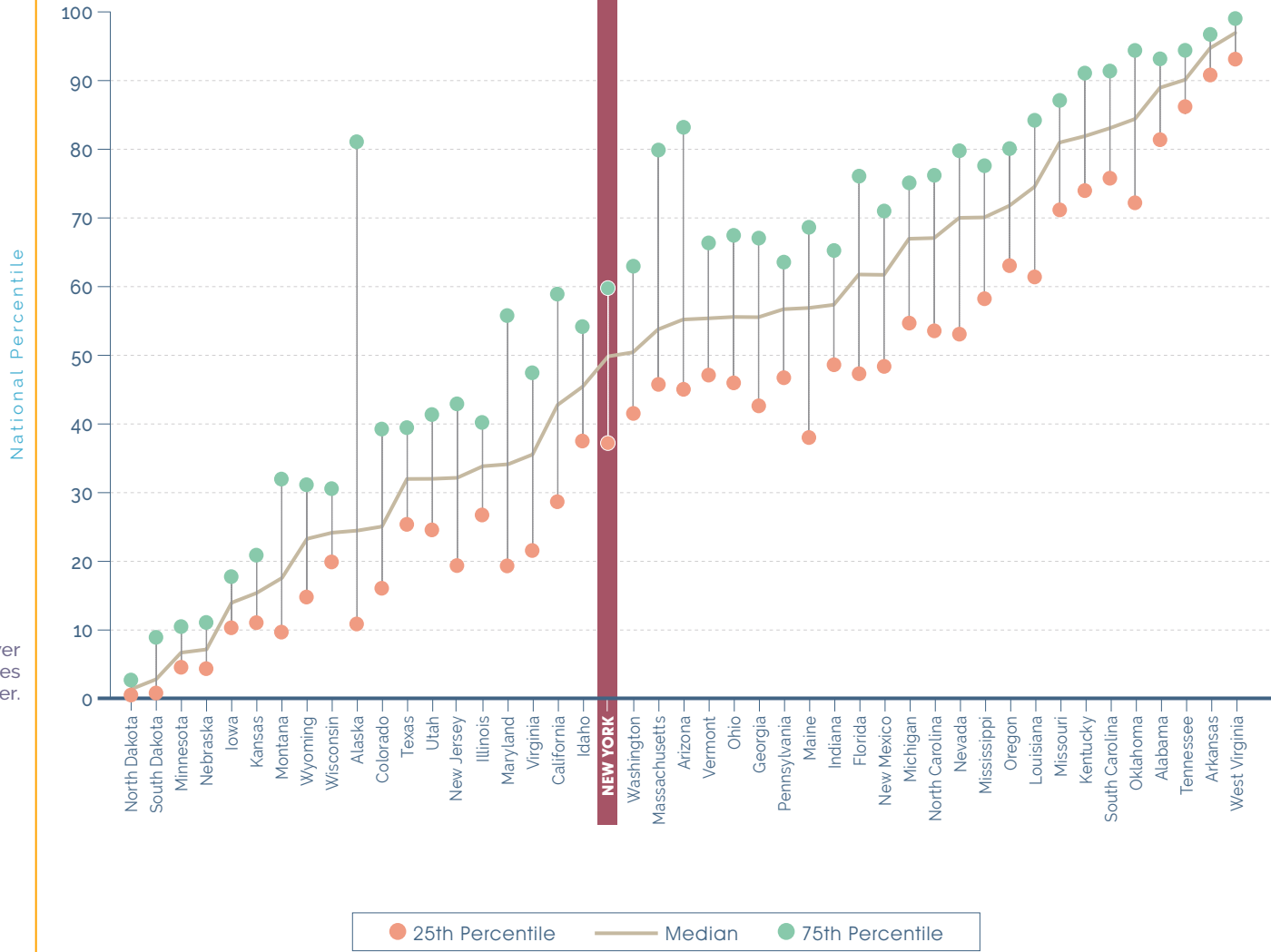
EXHIBIT D: Poor Physical Health County Percentiles by State (2019)





Results (continued)

EXHIBIT E: Poor Mental Health County Percentiles by State (2019)

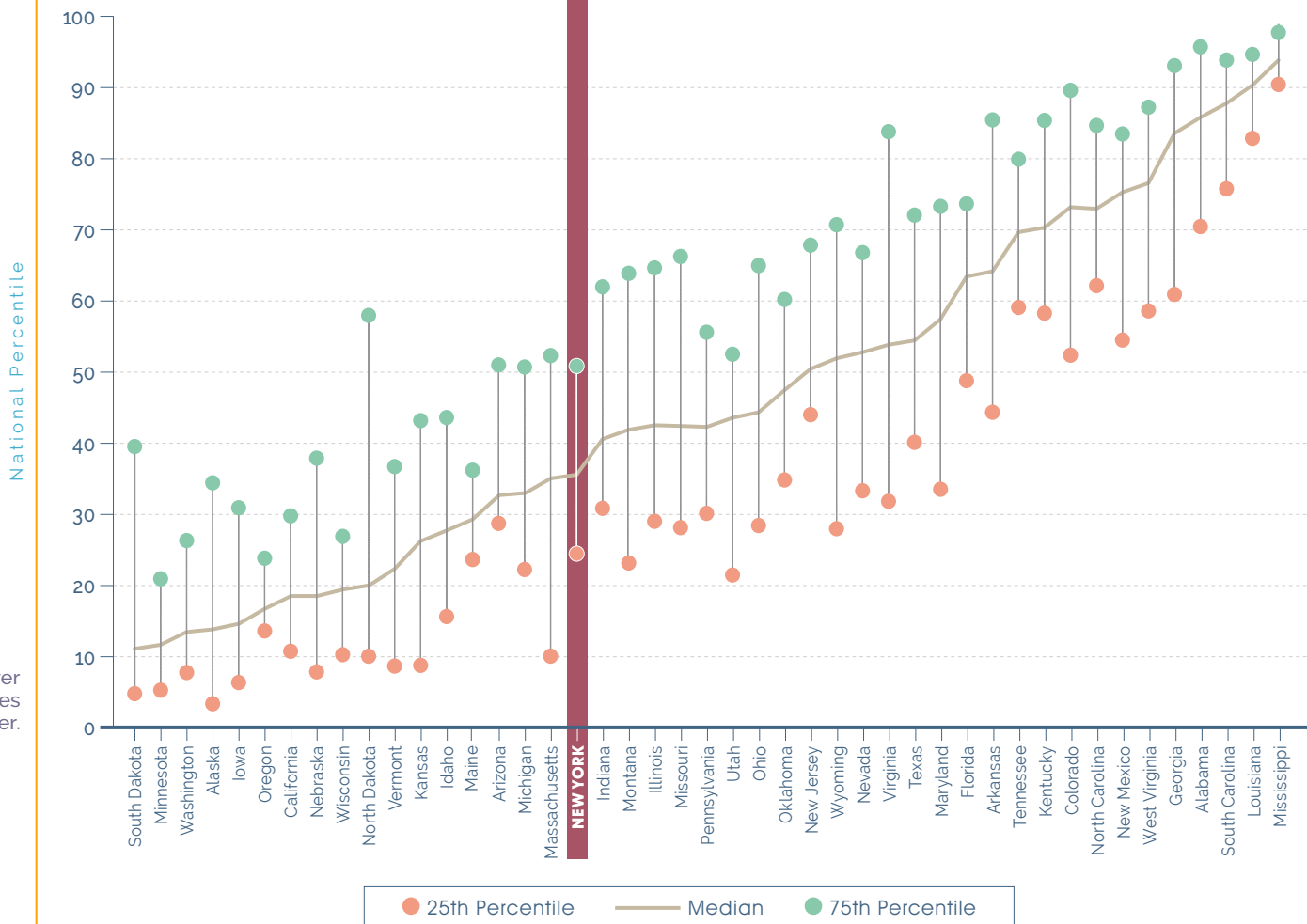




Results (continued)

Low Birthweight. New York State counties had a median national percentile of 35.5 for the measure of low birthweight (**Exhibit F**). New York State ranked 18th out of 45 states.

EXHIBIT F: Low Birthweight County Percentiles by State (2019)



Note: Lower percentiles are better.

Was the disparity between healthier and less healthy counties in New York State greater or less than that observed in other states?

- The disparity between healthier and less healthy counties in New York State was 21.1 national percentiles for overall health outcomes in both 2010 and 2019.² (See **Appendix A** for the full list of New York counties' rankings in 2010 and 2019.)

² The disparity between healthier and less healthy counties was measured by the difference between counties at the State's 75th percentile (less healthy) and 25th percentile (healthier).



Results (continued)

- Compared with other states, New York State had less disparity than 32 out of the 45 states examined in 2019 (**Exhibit A**).
- The state with the smallest disparity in 2019 was Minnesota (13.1 national percentiles). The state with the largest disparity was Alaska (75.9 national percentiles).

Did New York State counties' national performance change over time?

New York State counties ranked relatively healthy compared with other states' counties in both 2010 and 2019, but there was a slight decline in their relative rankings during this time period.

- The median national percentile in overall health outcomes has not changed much for New York State: 26.4 in 2010 compared with 28.9 in 2019 (see **Appendix B**). New York State's median health outcomes ranked 9th out of 45 states in 2010 compared with 14th in 2019.
- In general, most states did not significantly change their median percentiles during this period. Only one state's median national percentile improved by 10 or more percentiles (New Mexico) and two states declined by 10 or more percentiles (Wyoming and South Dakota).

Which New York State counties ranked consistently among the healthiest and least healthy counties in 2010 and 2019?

Many of the healthiest counties in 2010 remained among the healthiest in 2019 (**Exhibit G**). Additionally, many of the less healthy counties in New York State in 2010 were among the less healthy counties in 2019. Exhibit G shows the distribution of all New York State counties by national percentile rank for overall health outcomes in 2010 (left) and 2019 (right). Counties are grouped by color based upon their 2010 quintile of the distribution.

- In 2010, all but 3 New York State counties ranked in the top half of all U.S. counties in health outcomes; in 2019, all but 5 New York State counties were in the top 50%. No New York State counties were among the least healthy counties (national percentile values 80–100) in either year.
- In 2010, Bronx, Chemung, and Sullivan counties were the only counties in the bottom half of the national distribution. Bronx County was the least healthy county in New York State in both years, but improved 10 national percentile points, from 71.9 in 2010 to 62.2 in 2019.
- Fifteen of the 20 healthiest New York State counties in 2010 were among the healthiest 20 counties nationally in 2019. Similarly, 13 of New York's 20 least healthy counties in 2010 remained among the 20 least healthy counties nationally in 2019.



Results (continued)

EXHIBIT G: Distribution of New York State Counties' National Percentiles in 2010 and 2019

Access the [interactive online version here](#).

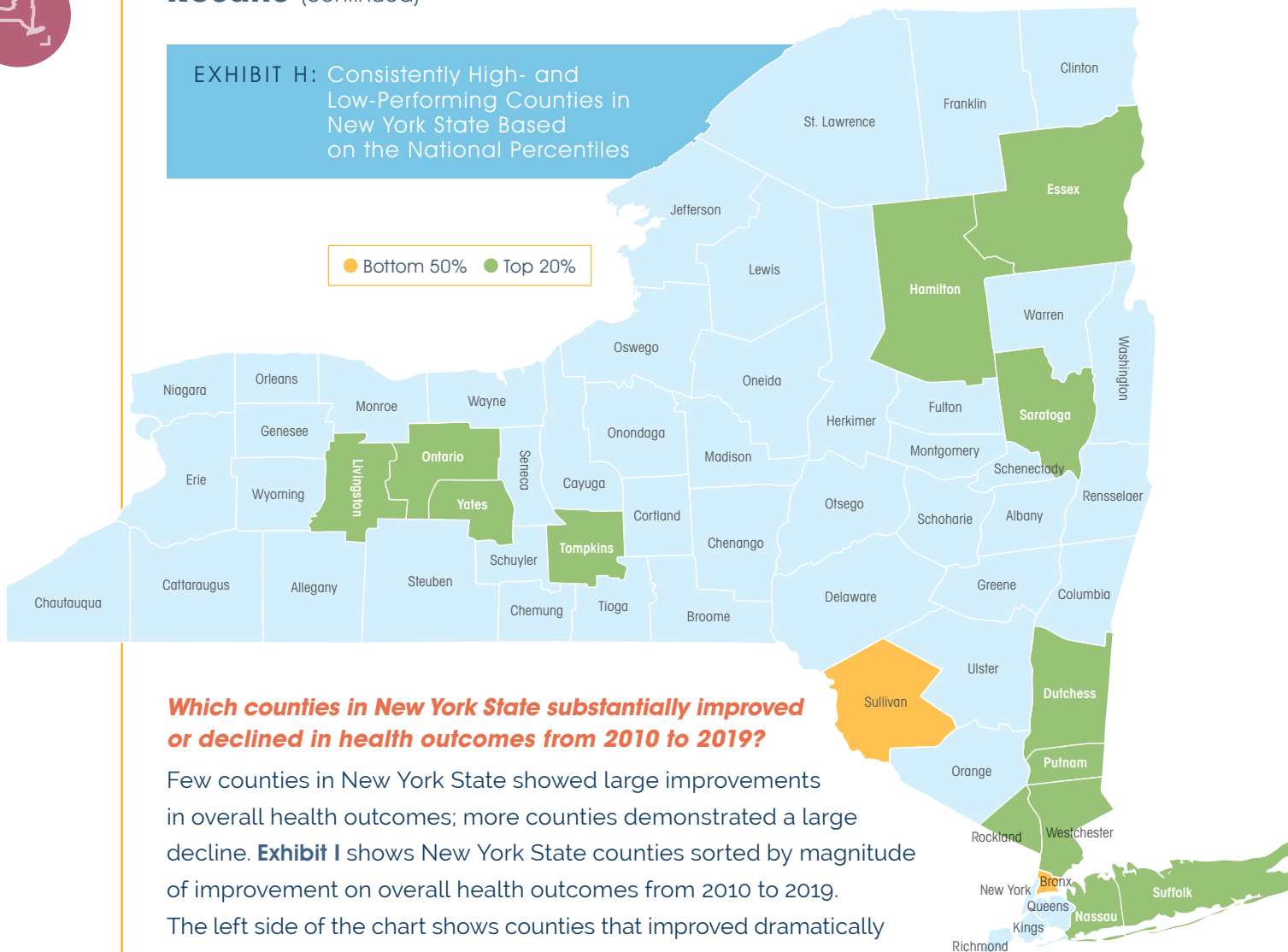


The following map (**Exhibit H**) highlights the 13 New York State counties that were ranked in the top 20% of all U.S. counties for both 2010 and 2019. These counties tended to cluster in the Long Island and Hudson Valley regions, as well as in the Genesee Valley, Central New York, and the Capital District. Also highlighted are the two counties that were in the bottom 50% of all counties in both years—Bronx County and Sullivan County.



Results (continued)

EXHIBIT H: Consistently High- and Low-Performing Counties in New York State Based on the National Percentiles



Which counties in New York State substantially improved or declined in health outcomes from 2010 to 2019?

Few counties in New York State showed large improvements in overall health outcomes; more counties demonstrated a large decline. **Exhibit I** shows New York State counties sorted by magnitude of improvement on overall health outcomes from 2010 to 2019. The left side of the chart shows counties that improved dramatically (i.e., lowered their national percentile), whereas the right side shows counties that experienced a relative decline in their health outcomes (i.e., increased their national percentile).

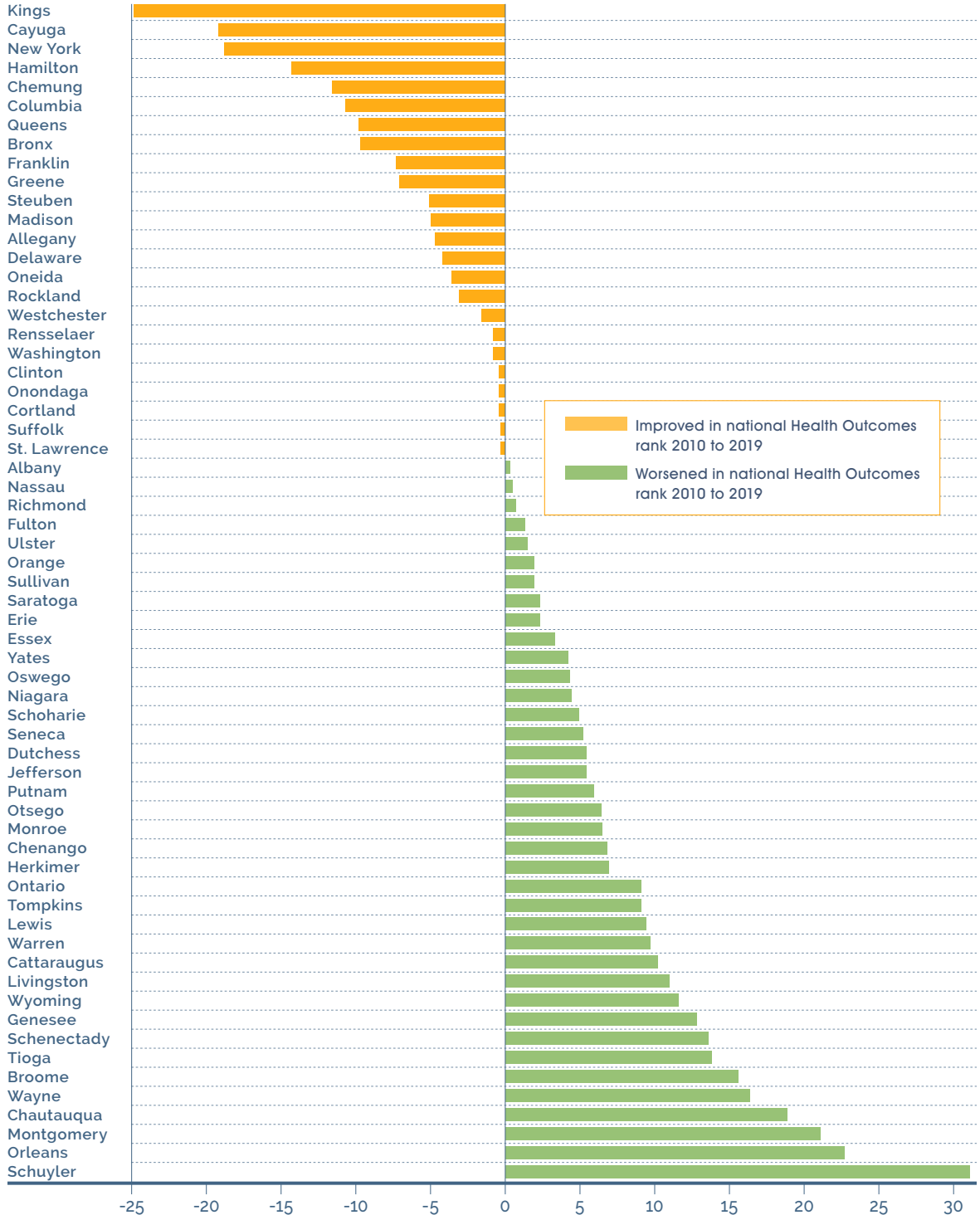
- Kings County (Brooklyn), the largest borough by population in New York City, experienced the largest improvement in its national percentile. Kings County moved up 24.9 percentiles from 47.1 in 2010 to 22.2 in 2019. In total, 6 counties improved their overall health outcomes by more than 10 national percentiles.
- Conversely, Schuyler County in the Southern Tier region saw the largest decline in overall health outcomes: a 31.1 national percentile change from 7.5 in 2010 to 38.6 in 2019. There were 12 counties with a decline in overall health outcomes of more than 10 percentiles.



Results (continued)

EXHIBIT I: Changes in Overall Health Outcome National Percentiles by New York State Counties: 2010 to 2019

Access the [interactive online version here](#).



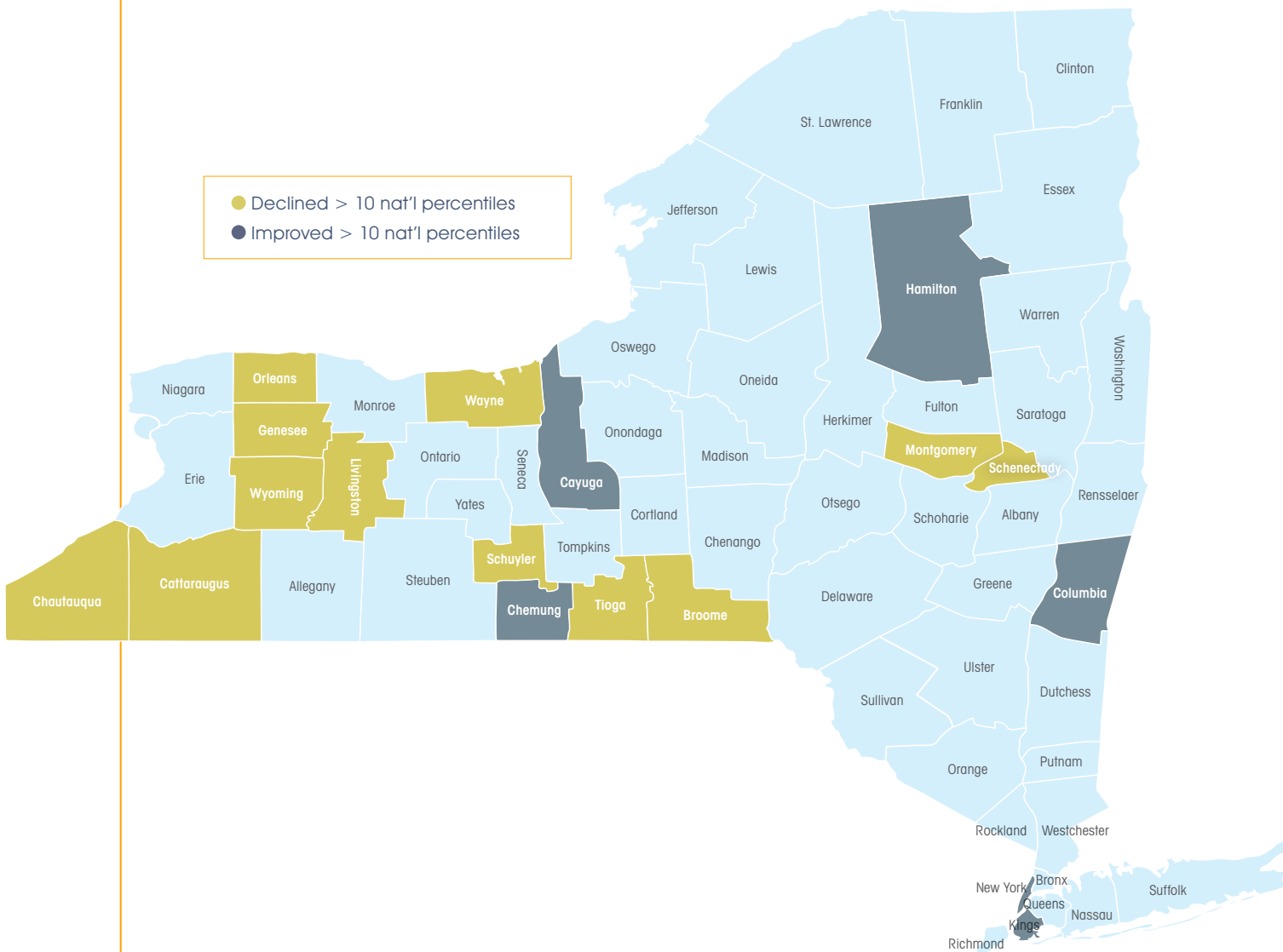


Results (continued)

The following map (**Exhibit J**) displays the counties in New York State that experienced an increase of at least 10 national percentile points or a decrease of at least 10 national percentile points from 2010 to 2019.

- The six counties with the largest improvements in health outcomes were not concentrated in any one area. The 12 counties that saw declines in health outcomes between 2010 and 2019 were clustered in Western New York, Central New York, and the Southern Tier.

EXHIBIT J: New York State Counties with Substantial Changes in Health Outcome National Percentiles: 2010 to 2019





Conclusions

New York State's counties perform relatively well in health outcomes compared with other states. In both 2010 and 2019, New York State's median county performance was among the top third of states. **New York State counties' performance is driven by low premature death rates, and less so by measures of morbidity** (self-reported health, days of poor physical and mental health). New York State's good overall health, relative to other states, is reflected in other health measures not ranked in the County Health Rankings, such as overall life expectancy (New Yorkers live approximately 1.5 years longer than the average American).³

Yet New York State saw a slight worsening of its health outcomes over the last decade, with New York State ranking 9th among states in 2010 and 14th in 2019. **Much of the decline is seen in Western New York, Central New York, and the Southern Tier.** Although a number of counties did see improvements in health outcomes in the same time period, those gains did not offset the effect of counties with worsening health outcomes.

Disparities in health outcomes across counties have not changed markedly in New York State, and the magnitude of disparities is less than in many states. Larger disparities are often observed in states with very few counties. However, Minnesota, Iowa, Nebraska, and Wisconsin each have 60–80 counties, and all four of these states have healthier median outcome ranks and less disparity between their healthier and less healthy counties than New York State. This comparison indicates that despite good standing relative to most states, New York State can still improve overall health outcomes and reduce disparities among its counties.

³ New York State Health Foundation, "Losing Ground: Life Expectancy Trends in New York State," <https://nyshealthfoundation.org/resource/losing-ground-life-expectancy-trends-in-new-york-state/>, accessed August 2019.



Methods

The County Health Rankings data are compiled annually and posted on www.countyhealthrankings.org. This analysis focuses on the first (2010) and most recent (2019) years of data available.

To calculate national percentile ranks, the underlying county-level values for all U.S. counties for each measure were standardized as Z-scores, then ranked from healthiest county to least healthy county. The percentile ranks for each county were identified from this distribution.

Detail on the actual scores of the counties and details for each measure are available at the County Health Rankings website.

When evaluating the median and range of county rankings by state, any state with 10 or fewer counties was omitted from the analysis. The excluded states were: Delaware, District of Columbia, Connecticut, Hawaii, New Hampshire, and Rhode Island.



Appendix A

New York County Rankings

OVERALL HEALTH BY COUNTY

	National Percentile Ranking				National Percentile Ranking		
	2010	2019	Difference		2010	2019	Difference
Albany	22.0	22.3	0.3	Niagara	46.8	51.2	4.4
Allegany	38.9	34.2	-4.7	Oneida	43.3	39.7	-3.6
Bronx	71.9	62.2	-9.7	Onondaga	29.5	29.1	-0.4
Broome	30.2	45.8	15.6	Ontario	5.1	14.2	9.1
Cattaraugus	44.2	54.4	10.2	Orange	20.3	22.2	1.9
Cayuga	39.9	20.7	-19.2	Orleans	18.3	41.0	22.7
Chautauqua	33.2	52.1	18.9	Oswego	35.6	39.9	4.3
Chemung	55.9	44.3	-11.6	Otsego	22.3	28.7	6.4
Chenango	30.9	37.7	6.8	Putnam	3.7	9.6	5.9
Clinton	28.8	28.4	-0.4	Queens	23.0	13.2	-9.8
Columbia	31.7	21.0	-10.7	Rensselaer	28.6	27.8	-0.8
Cortland	38.4	38.0	-0.4	Richmond	28.7	29.4	0.7
Delaware	28.5	24.3	-4.2	Rockland	8.2	5.1	-3.1
Dutchess	10.5	15.9	5.4	Saratoga	5.9	8.2	2.3
Erie	42.3	44.6	2.3	Schenectady	27.0	40.6	13.6
Essex	11.8	15.1	3.3	Schoharie	16.7	21.6	4.9
Franklin	38.8	31.5	-7.3	Schuyler	7.5	38.6	31.1
Fulton	37.8	39.1	1.3	Seneca	24.0	29.2	5.2
Genesee	22.7	35.5	12.8	St. Lawrence	36.5	36.2	-0.3
Greene	43.8	36.7	-7.1	Steuben	37.6	32.5	-5.1
Hamilton	18.3	4.0	-14.3	Suffolk	17.8	17.5	-0.3
Herkimer	30.7	37.6	6.9	Sullivan	53.6	55.5	1.9
Jefferson	24.8	30.2	5.4	Tioga	13.9	27.7	13.8
Kings	47.1	22.2	-24.9	Tompkins	6.6	15.7	9.1
Lewis	15.4	24.8	9.4	Ulster	26.6	28.1	1.5
Livingston	5.3	16.3	11.0	Warren	10.7	20.4	9.7
Madison	21.7	16.7	-5.0	Washington	30.5	29.7	-0.8
Monroe	26.4	32.9	6.5	Wayne	24.4	40.8	16.4
Montgomery	23.3	44.4	21.1	Westchester	10.2	8.6	-1.6
Nassau	7.6	8.1	0.5	Wyoming	11.9	23.5	11.6
New York	28.6	9.8	-18.8	Yates	11.0	15.2	4.2



Appendix A

New York County Rankings

PREMATURE DEATH						
	Raw Value			National Percentile Ranking		
	2010	2019	Difference	2010	2019	Difference
Albany	6450	5690	-760	23.7	12.5	-11.2
Allegany	7130	6620	-510	34.7	25.2	-9.5
Bronx	8430	6650	-1780	56.3	25.6	-30.7
Broome	6670	7610	940	27.1	42	14.9
Cattaraugus	7820	7400	-420	46.8	37.6	-9.2
Cayuga	6520	6300	-220	24.9	20.6	-4.3
Chautauqua	6430	8010	1580	23.3	48.5	25.2
Chemung	6470	7640	1170	24	42.7	18.7
Chenango	6780	7620	840	28.5	42.2	13.7
Clinton	6240	6130	-110	20	17.8	-2.2
Columbia	7440	6830	-610	40.8	28	-12.8
Cortland	7060	7270	210	33.6	35	1.4
Delaware	6910	6290	-620	30.8	20.5	-10.3
Dutchess	5620	5210	-410	11.3	8	-3.3
Erie	7200	7280	80	36	35.3	-0.7
Essex	6020	5210	-810	16.6	8	-8.6
Franklin	6620	6010	-610	26.3	16.5	-9.8
Fulton	6930	6910	-20	31.4	29.4	-2
Genesee	6120	7220	1100	18.1	34.1	16
Greene	8360	7020	-1340	55.3	31.3	-24
Hamilton	5280	5350	70	7.2	9.1	1.9
Herkimer	6930	7450	520	31.5	38.8	7.3
Jefferson	6390	6540	150	23	24	1
Kings	7010	5170	-1840	32.9	7.6	-25.3
Lewis	6500	6950	450	24.6	30.3	5.7
Livingston	5420	5520	100	9.1	10.6	1.5
Madison	5820	5950	130	13.9	15.6	1.7
Monroe	6150	6250	100	18.9	19.8	0.9
Montgomery	7000	7570	570	32.7	41.3	8.6
Nassau	4710	4300	-410	3.4	2.5	-0.9
New York	5480	3980	-1500	9.6	1	-8.6

continued ▶



Appendix A

New York County Rankings (continued)

	PREMATURE DEATH					
	Raw Value			National Percentile Ranking		
	2010	2019	Difference	2010	2019	Difference
Niagara	7150	7710	560	35.1	44	8.9
Oneida	6930	7060	130	31.1	31.8	0.7
Onondaga	6350	6640	290	22	25.4	3.4
Ontario	5530	5690	160	10.2	12.5	2.3
Orange	5950	5570	-380	15.5	11.1	-4.4
Orleans	5310	7280	1970	7.8	35.2	27.4
Oswego	6990	7290	300	32.6	35.3	2.7
Otsego	5800	6790	990	13.6	27.5	13.9
Putnam	4770	4960	190	3.8	6.2	2.4
Queens	5240	4280	-960	7.3	2.4	-4.9
Rensselaer	6380	6220	-160	22.4	19.1	-3.3
Richmond	6030	5610	-420	16.8	11.5	-5.3
Rockland	4860	4270	-590	4.4	2.4	-2
Saratoga	4930	4910	-20	4.9	6	1.1
Schenectady	6810	7130	320	29.1	32.9	3.8
Schoharie	6340	6070	-270	21.9	17.1	-4.8
Schuyler	5030	7400	2370	5.5	37.5	32
Seneca	6170	7170	1000	17.7	33.4	15.7
St. Lawrence	7220	6660	-560	36.6	25.8	-10.8
Steuben	6760	6710	-50	28.2	26.4	-1.8
Suffolk	5720	5780	60	12.5	13.6	1.1
Sullivan	8640	7690	-950	59.9	43.5	-16.4
Tioga	5250	6430	1180	7.5	22.4	14.9
Tompkins	4720	5420	700	3.4	9.7	6.3
Ulster	6380	6660	280	22.5	25.7	3.2
Warren	5960	6430	470	15.6	22.2	6.6
Washington	6920	6610	-310	31	25	-6
Wayne	6410	7110	700	23.1	32.6	9.5
Westchester	4770	4140	-630	3.8	1.8	-2
Wyoming	6110	6260	150	18.1	19.9	1.8
Yates	5700	6580	880	11.5	24.6	13.1



Appendix A

New York County Rankings (continued)

SELF-REPORTED HEALTH						
	Raw Value			National Percentile Ranking		
	2010	2019	Difference	2010	2019	Difference
Albany	12.2	13.5	1.3	18.7	20.1	1.4
Allegany	17.4	14.9	-2.5	62.6	33.3	-29.3
Bronx	26.6	26.8	0.2	94.4	96.2	1.8
Broome	13.1	17.2	4.1	24.7	52.7	28
Cattaraugus	19.4	18.5	-0.9	73.1	62.2	-10.9
Cayuga	17.1	13.7	-3.4	60.5	21.6	-38.9
Chautauqua	17.6	18.1	0.5	63.5	59	-4.5
Chemung	20.9	16.1	-4.8	79.4	43.6	-35.8
Chenango	13.3	16.2	2.9	26.3	44.8	18.5
Clinton	15.6	15.3	-0.3	41	37.1	-3.9
Columbia	12.5	11.6	-0.9	21.4	6.5	-14.9
Cortland	17.5	16.1	-1.4	63.2	43.1	-20.1
Delaware	13.6	15	1.4	28.7	34	5.3
Dutchess	9.2	13.4	4.2	4.7	19.3	14.6
Erie	14	15.9	1.9	30.9	41.7	10.8
Essex	12	13.4	1.5	17.7	19.6	1.9
Franklin	16.7	15.1	-1.6	47	35.1	-11.9
Fulton	19	16.6	-2.4	70.6	48.1	-22.5
Genesee	14.8	16.7	1.9	36.4	49.1	12.7
Greene	9.8	16.4	6.6	6.4	46.2	39.8
Hamilton	N/A	11.8	N/A	N/A	7.3	N/A
Herkimer	12.7	14.2	1.5	21.9	25.6	3.7
Jefferson	13.7	17.5	3.8	29.4	54.9	25.5
Kings	21.5	17.7	-3.8	81	56.2	-24.8
Lewis	16.4	13.2	-3.2	45.5	18.1	-27.4
Livingston	11.3	14.4	3.1	13.7	28.1	14.4
Madison	14	12.8	-1.2	30.9	14.8	-16.1
Monroe	14.9	14.6	-0.3	36.9	30.4	-6.5
Montgomery	11.4	16.2	4.8	14.5	44.5	30
Nassau	12.9	12.3	-0.6	23.2	10.8	-12.4
New York	19.5	14.5	-5	73.5	29.4	-44.1

continued ▶



Appendix A

New York County Rankings (continued)

	SELF-REPORTED HEALTH					
	Raw Value			National Percentile Ranking		
	2010	2019	Difference	2010	2019	Difference
Niagara	16.3	15.8	-0.5	44.7	41.3	-3.4
Oneida	14.1	15.7	1.6	31.5	39.6	8.1
Onondaga	13.6	14.1	0.5	28.8	25.2	-3.6
Ontario	8.4	13.5	5.1	3.4	20.1	16.7
Orange	16.4	16.1	-0.3	45	43.5	-1.5
Orleans	15.8	17.8	2	41.8	56.8	15
Oswego	18.5	16.1	-2.4	68	44.1	-23.9
Otsego	11.9	14.8	2.9	17.3	31.8	14.5
Putnam	9.1	11.4	2.3	4.6	5.3	0.7
Queens	20.9	18.5	-2.4	79.3	61.8	-17.5
Rensselaer	13.1	14.2	1.1	24.4	26.3	1.9
Richmond	15.7	17.7	2.1	41.3	56.5	15.2
Rockland	15.6	14.1	-1.5	40.8	25.2	-15.6
Saratoga	14.3	11.2	-3.1	32.4	4.2	-28.2
Schenectady	11.3	14.3	3	13.8	27.6	13.8
Schoharie	13.3	14.3	1	26.7	27.1	0.4
Schuyler	16.8	16.9	0.1	47.2	50.4	3.2
Seneca	N/A	15.2	N/A	N/A	35.8	N/A
St. Lawrence	15.3	17.1	1.8	38.8	52.1	13.3
Steuben	13.9	16.2	2.3	30.7	45.1	14.4
Suffolk	13.4	14.2	0.8	27.7	25.6	-2.1
Sullivan	14.7	19	4.3	35.8	66.3	30.5
Tioga	10.2	15.1	4.9	8.3	35.1	26.8
Tompkins	12.1	14.9	2.8	18.3	32.9	14.6
Ulster	13.2	13.9	0.7	25.2	23	-2.2
Warren	11.4	11.2	-0.2	14.5	4.5	-10
Washington	16.7	14.3	-2.4	47	27	-20
Wayne	12.4	16.3	3.9	20.4	45.4	25
Westchester	13	14.3	1.3	23.7	27.1	3.4
Wyoming	12.5	16.2	3.7	21.2	44.7	23.5
Yates	N/A	12.9	N/A	N/A	15.2	N/A



Appendix A

New York County Rankings (continued)

	POOR PHYSICAL HEALTH DAYS					
	Raw Value			National Percentile Ranking		
	2010	2019	Difference	2010	2019	Difference
Albany	2.6	3.3	0.7	9.8	20	10.2
Allegany	4.2	4	-0.2	71.3	57.1	-14.2
Bronx	4.4	4.9	0.5	75.7	88.3	12.6
Broome	3.4	4	0.6	38.7	55.1	16.4
Cattaraugus	3.7	4.4	0.7	51	74.1	23.1
Cayuga	3.7	3.6	-0.1	52	34.4	-17.6
Chautauqua	4.3	4.3	0	72.6	70.4	-2.2
Chemung	5	4.1	-0.9	89.2	61.7	-27.5
Chenango	4.6	3.8	-0.8	81.4	42	-39.4
Clinton	3.1	3.9	0.8	24.4	52.4	28
Columbia	3.5	3.5	0	40.7	29.4	-11.3
Cortland	3.5	3.6	0.1	40.7	35.5	-5.2
Delaware	3.8	3.6	-0.2	57.3	35.3	-22
Dutchess	3	3.3	0.3	20.7	20.3	-0.4
Erie	4	3.8	-0.2	62	47.2	-14.8
Essex	2.7	3.6	0.9	10.9	31.7	20.8
Franklin	3.3	4	0.7	31.7	54.3	22.6
Fulton	4.7	4.2	-0.5	83.2	66	-17.2
Genesee	4.1	4	-0.1	66.2	56.2	-10
Greene	4	3.9	-0.1	63.4	50	-13.4
Hamilton	N/A	3.2	N/A	N/A	17.8	N/A
Herkimer	3.7	3.8	0.1	51	41.4	-9.6
Jefferson	3.9	4	0.1	57.7	54.8	-2.9
Kings	3.7	3.6	-0.1	52	32	-20
Lewis	2.4	3.5	1.1	5.7	27.3	21.6
Livingston	3.3	3.8	0.5	32.5	47.1	14.6
Madison	3.5	3.2	-0.3	42	17.7	-24.3
Monroe	3.5	3.6	0.1	43	34.8	-8.2
Montgomery	2.8	4.3	1.5	15.8	70.6	54.8
Nassau	3	3.1	0.1	19.9	13.8	-6.1
New York	3.6	3.4	-0.2	46.5	22.2	-24.3

continued ▶



Appendix A

New York County Rankings (continued)

	POOR PHYSICAL HEALTH DAYS					
	Raw Value			National Percentile Ranking		
	2010	2019	Difference	2010	2019	Difference
Niagara	4.4	4.4	0	76.6	74.6	-2
Oneida	4.1	4	-0.1	66.9	56.3	-10.6
Onondaga	3.6	3.6	0	48.5	31	-17.5
Ontario	2.6	3.2	0.6	9.2	17.5	8.3
Orange	3.6	3.9	0.3	46	51.6	5.6
Orleans	4.4	3.8	-0.6	75.7	46.4	-29.3
Oswego	3.9	4	0.1	60.6	57.8	-2.8
Otsego	3.7	3.6	-0.1	53.2	32.4	-20.8
Putnam	2.6	3.1	0.5	9	13.9	4.9
Queens	3.2	3.4	0.2	27.5	23.7	-3.8
Rensselaer	3.3	3.6	0.3	35	35.4	0.4
Richmond	3.6	3.8	0.2	46.5	43	-3.5
Rockland	2.7	3.5	0.8	11.1	26.7	15.6
Saratoga	3.2	3.3	0.1	27.9	20.6	-7.3
Schenectady	3	3.8	0.8	21.6	42.6	21
Schoharie	3.8	3.7	-0.1	55.5	39.2	-16.3
Schuyler	3.2	3.8	0.6	28.4	45.2	16.8
Seneca	3.1	3.7	0.6	25.1	36.3	11.2
St. Lawrence	3.9	4.3	0.4	59.8	71.1	11.3
Steuben	4	4	0	64.2	58.2	-6
Suffolk	3.2	3.3	0.1	29.5	21.5	-8
Sullivan	3.5	4.4	0.9	42.7	74.9	32.2
Tioga	3.4	3.9	0.5	39.2	53.2	14
Tompkins	2.8	3.6	0.8	14.5	32.6	18.1
Ulster	3.3	3.8	0.5	32.5	41.8	9.3
Warren	3	3.6	0.6	19.3	35.4	16.1
Washington	4	3.9	-0.1	62	47.4	-14.6
Wayne	4	4.1	0.1	65	61.6	-3.4
Westchester	2.9	3.2	0.3	19.2	17.7	-1.5
Wyoming	2.4	3.9	1.5	5.2	48.1	42.9
Yates	2.7	3.4	0.7	11.8	23.6	11.8



Appendix A

New York County Rankings (continued)

	POOR MENTAL HEALTH DAYS					
	Raw Value			National Percentile Ranking		
	2010	2019	Difference	2010	2019	Difference
Albany	2.7	3.8	1.1	19.5	40	20.5
Allegany	3.9	4.3	0.4	71.7	73.3	1.6
Bronx	3.9	4.3	0.4	71.3	71.3	0
Broome	3.8	4	0.2	66.9	54.4	-12.5
Cattaraugus	3.6	4.6	1	59.3	84.2	24.9
Cayuga	5	3.7	-1.3	93.2	36.6	-56.6
Chautauqua	3.7	4.1	0.4	63.4	59.7	-3.7
Chemung	5.7	4.2	-1.5	97.3	64.9	-32.4
Chenango	3	4	1	29.6	52.1	22.5
Clinton	3.7	4.1	0.4	64.9	57.8	-7.1
Columbia	3	3.5	0.5	31.8	25.6	-6.2
Cortland	3.6	4.1	0.5	60.6	60	-0.6
Delaware	3.1	3.8	0.7	34	42	8
Dutchess	3	3.9	0.9	32.2	45.9	13.7
Erie	3.5	4	0.5	54.1	55.8	1.7
Essex	3.7	3.7	0	64	31.8	-32.2
Franklin	3.8	4.2	0.4	69.2	65.2	-4
Fulton	3.6	4.1	0.5	59	59.8	0.8
Genesee	3.9	4.3	0.4	70.4	72.7	2.3
Greene	2.8	3.7	0.9	22	35.6	13.6
Hamilton	N/A	3.3	N/A	N/A	15.9	N/A
Herkimer	4	4.1	0.1	74	61.3	-12.7
Jefferson	3.4	3.9	0.5	53	45.8	-7.2
Kings	3.5	3.9	0.4	57.6	46.3	-11.3
Lewis	2.5	3.6	1.1	12.7	29.3	16.6
Livingston	2.2	4	1.8	6.6	50.6	44
Madison	3.7	4	0.3	64.4	50.2	-14.2
Monroe	3.2	4.1	0.9	40.8	59.4	18.6
Montgomery	3.1	4.1	1	34	60.1	26.1
Nassau	2.6	3.5	0.9	15	22.3	7.3
New York	3.6	3.6	0	59.3	26.8	-32.5

continued ▶



Appendix A

New York County Rankings (continued)

	POOR MENTAL HEALTH DAYS					
	Raw Value			National Percentile Ranking		
	2010	2019	Difference	2010	2019	Difference
Niagara	4.2	4	-0.2	79.8	51.6	-28.2
Oneida	4	4	0	76.1	51.2	-24.9
Onondaga	3.2	3.8	0.6	40.4	38.8	-1.6
Ontario	2.7	3.7	1	19	34.4	15.4
Orange	3.1	3.8	0.7	37	41.5	4.5
Orleans	3.2	4.4	1.2	40.4	75.6	35.2
Oswego	2.5	4.1	1.6	13.7	58.2	44.5
Otsego	3.7	3.9	0.2	64	48.3	-15.7
Putnam	2.7	3.5	0.8	17.9	24.4	6.5
Queens	3.4	3.3	-0.1	48.8	16.4	-32.4
Rensselaer	4	3.9	-0.1	75.4	47.4	-28
Richmond	3.4	4.2	0.8	50.7	65.3	14.6
Rockland	3.2	3.4	0.2	42.2	18.5	-23.7
Saratoga	2.5	3.6	1.1	12.5	31.2	18.7
Schenectady	2.9	4.1	1.2	28	58.7	30.7
Schoharie	2.9	3.8	0.9	25.3	38.8	13.5
Schuyler	2.4	4.1	1.7	10.1	56.8	46.7
Seneca	3.7	3.9	0.2	66.2	46.8	-19.4
St. Lawrence	2.9	4.1	1.2	28	62.1	34.1
Steuben	4	4	0	75.7	51.4	-24.3
Suffolk	3.2	3.3	0.1	40.1	15.5	-24.6
Sullivan	3.9	4.1	0.2	71.9	56.6	-15.3
Tioga	3.2	3.8	0.6	39	41.6	2.6
Tompkins	3.4	3.8	0.4	51.8	43.5	-8.3
Ulster	3.9	4.1	0.2	70	58	-12
Warren	2.2	3.5	1.3	6.2	23	16.8
Washington	2.6	4	1.4	16.2	49.6	33.4
Wayne	3.6	4.3	0.7	59	71.9	12.9
Westchester	3	3.4	0.4	31	17.8	-13.2
Wyoming	4	3.8	-0.2	74.5	43.1	-31.4
Yates	3.2	3.8	0.6	38.8	41.3	2.5



Appendix A

New York County Rankings (continued)

LOW BIRTHWEIGHT						
	Raw Value			National Percentile Ranking		
	2010	2019	Difference	2010	2019	Difference
Albany	8	8.4	0.4	57.1	62.3	5.2
Allegany	6.6	7	0.4	23.2	31.6	8.4
Bronx	9.6	9.4	-0.2	83.1	78.8	-4.3
Broome	7.4	7.7	0.3	42	48.5	6.5
Cattaraugus	6.7	8.1	1.4	26.2	57.8	31.6
Cayuga	7.5	6.5	-1	44.6	19.3	-25.3
Chautauqua	7.1	7.4	0.3	34.3	39.4	5.1
Chemung	8.3	7.2	-1.1	64.6	36.2	-28.4
Chenango	7	6.6	-0.4	34	22	-12
Clinton	7.9	7.3	-0.6	54	37.2	-16.8
Columbia	7	6.5	-0.5	32.2	19.3	-12.9
Cortland	7.5	7.4	-0.1	46.3	40	-6.3
Delaware	6.8	6.9	0.1	26.6	28.5	1.9
Dutchess	6.8	7.5	0.7	26.6	43.9	17.3
Erie	8.3	8.6	0.3	64.6	66.7	2.1
Essex	5.6	7.3	1.7	5.6	39.3	33.7
Franklin	8.6	7.9	-0.7	69.3	52.3	-17
Fulton	6.4	7.4	1	19.5	39.5	20
Genesee	6	5.9	-0.1	11.9	9.5	-2.4
Greene	7.6	7.8	0.2	48.1	49.4	1.3
Hamilton	7	4.6	-2.4	30.9	1.2	-29.7
Herkimer	6.6	7.2	0.6	23.7	34.4	10.7
Jefferson	6.7	6.6	-0.1	24.8	22.8	-2
Kings	8.6	7.8	-0.8	69.6	50.7	-18.9
Lewis	6.2	6.8	0.6	14.2	25.9	11.7
Livingston	5.8	5.9	0.1	8.7	9.2	0.5
Madison	7.2	6.5	-0.7	37.5	18.9	-18.6
Monroe	7.8	8.4	0.6	51.1	64.1	13
Montgomery	6.8	7.2	0.4	27.8	35.9	8.1
Nassau	7.6	8	0.4	48.1	53.9	5.8
New York	8.3	8.4	0.1	64.7	62.4	-2.3

continued ▶



Appendix A

New York County Rankings (continued)

	LOW BIRTHWEIGHT					
	Raw Value			National Percentile Ranking		
	2010	2019	Difference	2010	2019	Difference
Niagara	7.9	8.3	0.4	55.2	60.7	5.5
Oneida	8.4	7.9	-0.5	65.3	52.7	-12.6
Onondaga	8.2	7.8	-0.4	60.8	49.3	-11.5
Ontario	6.1	6.6	0.5	12.5	21.2	8.7
Orange	6.7	7.1	0.4	25.9	32.3	6.4
Orleans	6.9	6.9	0	31.1	29.3	-1.8
Oswego	7.6	7.2	-0.4	47.5	36.6	-10.9
Otsego	7.5	6.9	-0.6	44.4	29.1	-15.3
Putnam	6.7	7.5	0.8	26.3	44.1	17.8
Queens	8.1	8.1	0	59.5	58.2	-1.3
Rensselaer	7.5	7.9	0.4	43.9	51.6	7.7
Richmond	8.1	7.9	-0.2	59.6	53.6	-6
Rockland	6.7	6.1	-0.6	25.9	13.1	-12.8
Saratoga	6.3	6.5	0.2	16.6	21	4.4
Schenectady	7.9	8.4	0.5	54.9	63.3	8.4
Schoharie	5.7	6.8	1.1	7.3	25.5	18.2
Schuyler	6.4	6.9	0.5	18	27.7	9.7
Seneca	6.8	6.2	-0.6	28.1	14	-14.1
St. Lawrence	7.5	6.9	-0.6	45.4	27.6	-17.8
Steuben	7.7	6.8	-0.9	49.1	25.6	-23.5
Suffolk	7.4	7.7	0.3	41.8	48	6.2
Sullivan	7.7	8.6	0.9	49.9	66.7	16.8
Tioga	7.8	7	-0.8	51	30.5	-20.5
Tompkins	6.7	6.4	-0.3	25.6	17.9	-7.7
Ulster	7.2	6.7	-0.5	38.9	25	-13.9
Warren	6.6	7.1	0.5	22.6	32.7	10.1
Washington	7	7.2	0.2	33.8	35.3	1.5
Wayne	6.5	7.2	0.7	21	36.3	15.3
Westchester	7.8	8	0.2	51.7	54.7	3
Wyoming	5.2	6.2	1	3.2	13.1	9.9
Yates	5.6	5	-0.6	6.5	2.3	-4.2



Appendix B

U.S. State Rankings

OVERALL HEALTH OUTCOMES

Median County National Percentile Ranking

State	2010	2019	Change
Alabama	87.8	85.8	-2
Alaska	38.3	28.8	-9.5
Arizona	51.4	47.3	-4.1
Arkansas	79.4	86.3	6.9
California	33.8	28.9	-4.9
Colorado	31.7	30.2	1.5
Florida	63.6	60.3	-3.3
Georgia	80.4	74	-6.4
Idaho	31.5	31.4	-0.1
Illinois	37.2	39.8	2.6
Indiana	46.7	49.9	3.2
Iowa	12.5	13.1	0.6
Kansas	32.8	29.6	-3.2
Kentucky	78.1	81.5	3.4
Louisiana	84.1	81.6	-2.5
Maine	27.6	31	3.4
Maryland	38.6	38.2	-0.4
Massachusetts	18	25.2	7.2
Michigan	36.1	42.5	6.5
Minnesota	9.8	7.9	-1.9
Mississippi	92.9	90.3	-2.6
Missouri	59.1	61	1.9
Montana	37.4	32.2	-5.2
Nebraska	13.9	15.5	1.6
Nevada	55.5	49.5	-6
New Jersey	29.7	27.5	-2.2
New Mexico	68.9	79.6	10.7
New York	26.5	28.9	2.4
North Carolina	67.9	62.5	-5.4
North Dakota	22.3	14.8	-7.5
Ohio	42.3	52.1	9.8
Oklahoma	75	77.2	2.2
Oregon	26.5	34.6	8.1
Pennsylvania	38	41.8	3.8
South Carolina	83.5	82	-1.5
South Dakota	28.7	14.7	-14.1
Tennessee	78.4	81.7	3.3
Texas	55.5	53.7	-1.8
Utah	28.9	28.1	-0.8
Vermont	16.6	22.7	6.1
Virginia	51.7	47.3	-4.4
Washington	24.9	21	-3.9
West Virginia	72.7	79.5	6.8
Wisconsin	14.9	17.7	2.8
Wyoming	40.7	30.5	-10.2

PREMATURE DEATH

Median County National Percentile Ranking

State	2010	2019	Change
Alabama	84	83.9	-0.1
Alaska	47.5	46.1	-1.4
Arizona	49.9	45.5	-4.4
Arkansas	77	82.3	5.3
California	33.4	22.5	-10.9
Colorado	23.5	26.3	2.8
Florida	64.4	55	-9.4
Georgia	78.3	67.4	-10.9
Idaho	31.8	32	0.2
Illinois	39.2	36.6	-2.6
Indiana	45.8	51.8	6.0
Iowa	16.1	19.2	3.1
Kansas	43.3	43.8	0.5
Kentucky	68.6	79.8	11.2
Louisiana	85.1	75.4	-9.7
Maine	29.3	34.8	5.5
Maryland	36.7	34.9	-1.8
Massachusetts	14.8	19.4	4.6
Michigan	34.5	37	2.5
Minnesota	10.6	13.5	2.9
Mississippi	87.9	88.7	0.8
Missouri	60.2	58.1	-2.1
Montana	48.6	41.6	-7.0
Nebraska	18.9	21.8	2.9
Nevada	62	48.3	-13.7
New Jersey	23.4	20.6	-2.8
New Mexico	68.4	73.2	4.8
New York	21.1	24.9	3.8
North Carolina	63.9	59.8	-4.1
North Dakota	31.1	27.8	-3.3
Ohio	39.2	53.4	14.2
Oklahoma	79	80	1.0
Oregon	31.2	32.4	1.2
Pennsylvania	35.8	44.2	8.4
South Carolina	79.3	71.7	-7.6
South Dakota	34.9	36.4	1.5
Tennessee	78.2	78	-0.2
Texas	53.7	52.2	-1.5
Utah	36.3	26.2	-10.1
Vermont	15.6	23.2	7.6
Virginia	52.7	49.9	-2.8
Washington	27	19.6	-7.4
West Virginia	64.3	69.6	5.3
Wisconsin	17.2	21.3	4.1
Wyoming	36.5	27.9	-8.6



Appendix B

U.S. State Rankings (continued)

SELF-REPORTED HEALTH

Median County National Percentile Ranking

State	2010	2019	Change
Alabama	82.4	84.1	1.7
Alaska	36.8	38.4	1.6
Arizona	62.1	77	14.9
Arkansas	75.4	86.5	11.1
California	53.3	46	-7.3
Colorado	33.4	21.4	-12.0
Florida	64.2	64.6	0.4
Georgia	66.3	71.4	5.1
Idaho	44.9	41.9	-3.0
Illinois	47	38.2	-8.8
Indiana	60.2	48.8	-11.6
Iowa	15.3	13	-2.3
Kansas	26.9	30.5	3.6
Kentucky	87.9	83.1	-4.8
Louisiana	77.5	76.3	-1.2
Maine	31.1	25.5	-5.6
Maryland	25.9	21.6	-4.3
Massachusetts	16.8	15.8	-0.1
Michigan	37.4	42	4.6
Minnesota	18.2	10.3	-7.9
Mississippi	90.9	86.4	-4.5
Missouri	60.3	67.6	7.3
Montana	26.2	23.6	-2.6
Nebraska	22.6	20	-2.6
Nevada	62.4	49.3	-13.1
New Jersey	33	33.8	0.8
New Mexico	71.5	80.9	9.4
New York	31.2	35.2	4.0
North Carolina	76.3	60.2	-16.1
North Dakota	16.9	14.5	-2.4
Ohio	33.8	46.4	12.6
Oklahoma	75.9	69.8	-6.1
Oregon	40.4	33.9	-6.5
Pennsylvania	38.7	28.5	-10.2
South Carolina	72.8	77.7	4.9
South Dakota	25.2	6.35	-18.9
Tennessee	75.1	75.2	0.1
Texas	60.2	64.7	4.5
Utah	27.3	18.6	-8.7
Vermont	16.1	6.15	-10.0
Virginia	38.5	46.7	8.2
Washington	34.2	26.9	-7.3
West Virginia	82.8	83.5	0.7
Wisconsin	19.6	21.3	1.7
Wyoming	23.9	30.6	6.7

POOR PHYSICAL HEALTH DAYS

Median County National Percentile Ranking

State	2010	2019	Change
Alabama	79.1	84.4	5.3
Alaska	45.3	43.5	-1.8
Arizona	49.9	78.2	28.3
Arkansas	73.6	89.3	15.7
California	57.9	38.1	-19.8
Colorado	27.2	23.3	-3.9
Florida	64.3	71.9	7.6
Georgia	60.9	67.5	6.6
Idaho	45.8	51	5.2
Illinois	42.6	50.1	7.5
Indiana	52.2	48.1	-4.1
Iowa	15.9	8.7	-7.2
Kansas	20.6	16.4	-4.2
Kentucky	88.9	88.3	-0.6
Louisiana	56	69.1	13.1
Maine	50.3	36.5	-13.8
Maryland	32.8	13.5	-19.3
Massachusetts	35.7	31.8	-3.9
Michigan	42.8	64.5	21.7
Minnesota	25.3	9.8	-15.5
Mississippi	76.7	69.9	-6.8
Missouri	67.6	81.7	14.1
Montana	35.7	26.5	-9.2
Nebraska	16.7	10.4	-6.3
Nevada	62	57.5	-4.5
New Jersey	37.9	37.4	-0.5
New Mexico	70.8	78.9	8.1
New York	41.1	42.5	1.4
North Carolina	68.7	52.4	-16.3
North Dakota	11.9	3.3	-8.6
Ohio	44.8	46	1.2
Oklahoma	72.6	75.4	2.8
Oregon	58.2	47.3	-10.9
Pennsylvania	41.9	34	-7.9
South Carolina	64	74.2	10.2
South Dakota	15	9.4	-5.6
Tennessee	70.9	89.4	18.5
Texas	57.9	43.3	-14.6
Utah	34.8	31.3	-3.5
Vermont	35.9	24.4	-11.5
Virginia	51.3	35.8	-15.5
Washington	58.2	51.6	-6.6
West Virginia	87.6	94.3	6.7
Wisconsin	29	27.3	-1.7
Wyoming	25.7	28.9	3.2



Appendix B

U.S. State Rankings (continued)

POOR MENTAL HEALTH DAYS

Median County National Percentile Ranking

State	2010	2019	Change
Alabama	82	89	7.0
Alaska	25.2	24.4	-0.8
Arizona	62.8	55.3	-7.5
Arkansas	71.6	94.8	23.2
California	60.3	42.8	-17.6
Colorado	33	25	-8.0
Florida	63.4	61.7	-1.7
Georgia	60.5	55.7	-4.8
Idaho	43	45.4	2.4
Illinois	44.1	33.7	-10.6
Indiana	49.8	57.5	7.7
Iowa	16.6	13.8	-2.8
Kansas	22	15.3	-6.7
Kentucky	89.5	82	-7.5
Louisiana	31.2	74.5	43.3
Maine	63.4	56.9	-6.5
Maryland	42.1	34.2	-7.9
Massachusetts	49.4	53.4	4.0
Michigan	62.6	67.1	4.5
Minnesota	22	6.7	-15.3
Mississippi	77.4	70.2	-7.2
Missouri	68.7	80.9	12.2
Montana	34.2	17.5	-16.7
Nebraska	12.3	7	-5.3
Nevada	65.5	70.1	4.6
New Jersey	47.3	32.2	-15.1
New Mexico	67.1	61.9	-5.2
New York	49.5	49.7	0.2
North Carolina	45.8	67.2	21.4
North Dakota	14.7	1.6	-13.1
Ohio	59.4	55.7	-3.7
Oklahoma	72.7	84.2	11.5
Oregon	45.7	71.9	26.2
Pennsylvania	59	56.7	-2.3
South Carolina	66.9	83.1	16.2
South Dakota	15.8	2.8	-13.0
Tennessee	58.2	90.2	32.0
Texas	58.2	32.1	-26.1
Utah	43.5	32.1	-11.4
Vermont	46.7	55.5	8.8
Virginia	58.2	35.5	-22.7
Washington	45.7	50.4	4.7
West Virginia	85.2	97	11.8
Wisconsin	25.2	24.1	-1.1
Wyoming	30	23.1	-6.9

LOW BIRTHWEIGHT

Median County National Percentile Ranking

State	2010	2019	Change
Alabama	85.3	86	0.7
Alaska	12.2	13.8	1.6
Arizona	35.1	32.7	-2.4
Arkansas	70.2	64.4	-5.8
California	13.1	18.4	5.3
Colorado	73.9	73.2	-0.7
Florida	61.9	63.6	1.7
Georgia	82.7	83.8	1.1
Idaho	27	27.8	0.8
Illinois	37.5	42.6	5.1
Indiana	41.8	40.5	-1.3
Iowa	20.9	14.6	-6.3
Kansas	39.6	26.2	-13.4
Kentucky	70.4	70.4	0.0
Louisiana	91.4	90.5	-0.9
Maine	16.3	29.4	13.1
Maryland	53.9	57.6	3.7
Massachusetts	37.4	35.1	-2.3
Michigan	30.1	33	2.9
Minnesota	11.3	11.7	0.4
Mississippi	94.6	94	-0.6
Missouri	36.2	42.6	6.4
Montana	38.5	42	3.5
Nebraska	24.6	18.6	-6.0
Nevada	46.2	52.9	6.7
New Jersey	53.8	50.6	-3.2
New Mexico	67.1	75.4	8.3
New York	34.3	35.5	1.2
North Carolina	76.2	73.2	-3.0
North Dakota	41.5	20.1	-21.4
Ohio	43.7	44.5	0.8
Oklahoma	48.3	47.5	-0.8
Oregon	8.3	17	8.7
Pennsylvania	41.6	42.6	1.0
South Carolina	91	88	-3.0
South Dakota	41.4	10.9	-30.5
Tennessee	71.8	69.8	-2.0
Texas	53.6	54.9	1.3
Utah	31.7	43.5	11.8
Vermont	22.8	22.2	-0.6
Virginia	61.7	53.9	-7.8
Washington	13	13.3	0.3
West Virginia	70.6	76.8	6.2
Wisconsin	12	19.5	7.5
Wyoming	54.2	52	-2.2



Improving the state of
New York's health

VOICE:
212-664-7656

FAX:
646-421-6029

MAIL:
1385 Broadway,
23rd Floor
New York, NY 10018

WEB:
www.nyshealth.org